

**University  
Centre  
Rotherham**

**A bright  
future  
awaits.**

**Study smart, study local.**

# Welcome




## Your professional and personal fulfilment is at the heart of everything we do.

**Studying with us is a unique and rewarding learning experience which is all about you.**

Our smaller class sizes allow our expert staff to tailor their teaching to your learning styles whilst getting to know you and provide the support you deserve.

With us, what you learn is what you use. Our industry-experienced lecturers bring passion and apply real world knowledge to what they teach. We work closely with key employers from a range of industries co-designing our courses, so you can be assured that what you're learning is what is required within your chosen career. You'll be able to soak up the skills needed to hit the ground running in the world of work – whether as a first-time role, a step-up or a career change.

We're proud to be the only Higher Education provider in the South Yorkshire region that is rated Gold in the Teaching Excellence Framework (TEF). This is in recognition of our students from all backgrounds achieving outstanding outcomes.

Our full and part-time courses allow you to fit studying alongside existing commitments. Some of our full-time courses are delivered over only one to two days a week (depending on subject area). This means that, even if you have a busy schedule, you can develop key skills and knowledge in something you're passionate about. Look for the  symbol next to our course descriptions throughout this prospectus to discover courses you can study over two days or less.

Our modern campus boasts an impressive learning environment so you can get the

most out of your learning experience with us. Our two-storey library is equipped with a wide range of digital and physical resources. Our classrooms contain the latest equipment including interactive teaching boards. If you'd rather study outside of the library, you can borrow a laptop from Student Services and choose from one of our several breakout study areas. For social catch-ups, we have a spacious café area and impressive outdoor amphitheatre.

We're part of the RNN Group alongside Rotherham College, North Notts College, Dearne Valley College, RNN Training and a number of other subsidiary training organisations. Our wide range of higher-level and degree courses are offered at our sites across South Yorkshire and North Nottinghamshire, developing the skills for success in a variety of local communities.

Accredited by top partner universities including Sheffield Hallam University and University of Hull, our courses will set you apart in the world of work. Our students graduate from a variety of higher-level courses each year and we are extremely proud of their continued success.

Our prospectus gives an insight into all the benefits of studying degrees locally, such as gaining specific skills for your dream career and increasing your earning potential. Throughout this prospectus, you can find out more about our available programmes of study, how to apply, ways to get in touch, funding and financial support and more.

**Whether you're continuing your studies, changing career path or returning to education, we're here to help you succeed.**



Welcome	2
Why Higher Education?	6
Gold Standard Learning	8
University Centre Rotherham (UCR)	10
Study at Our Colleges	12
Our Campus Locations	14
Why Study With Us?	16
Why Study Locally?	18
Expert Delivery	20
We're Here to Help	22
Excellent Employer Links	24
Continuing in Education	26
Returning to Education	28
A Day in the Life of...	30
Higher and Degree Apprenticeships	32
What Our Students Say	34
Funding and Financial Support	36
Entry Requirements	38
Course Levels Explained	40
The Application Process	42
Find out More	44
Our Courses	46

# Contents

# Anything is possible

## Studying a higher-level course is...

### A Dare to Dream Big

Whether that's a step-up in your current job, a change of direction or starting something completely new, a higher-level qualification equips you with the skills, knowledge and expertise to excel in your chosen career.

Having a degree or other higher-level qualification under your belt is also proven to improve career prospects and job satisfaction.

### A Boost to your Potential Earnings

As a graduate, over your working life you could be on average £115,000\* better off than someone who hasn't studied a higher-level course. You could gain greater financial stability and a serious advantage if you're looking to start earning more, quicker.

### A Lifetime of Opportunity

Our higher-level courses and higher and degree apprenticeships are packed with people in the know. We have excellent employer links, guest speakers, masterclasses, employer visits and industry-experienced lecturers, helping you build a professional network and open up a range of opportunities for both during and after your studies with us.

\*The Institute for Fiscal Studies (2020).



# A small centre with a big reputation

**We're proud to be rated Gold in the Teaching Excellence Framework (TEF). Awarded by the Office for Students, this recognises our success in providing students from all backgrounds outstanding outcomes.**

We're the only Higher Education provider in the South Yorkshire region to achieve this prestigious award.

The TEF panel reviews and assesses Higher Education providers against a comprehensive series of measures.

## **The panel's judgement highlighted that we have:**

- An outstanding personalised approach to learning and academic development
- Impressive levels of full and part-time student progression into employment or further study
- Excellent student satisfaction with assessment, feedback and academic support
- Programmes to deliver vocational and sector-specific skills and knowledge that are most highly valued by employers
- Highly effective systems of support for student progression
- Excellent student representation, communication, student engagement and an active commitment to learning and study
- A wide range of opportunities for students to engage directly in developments at the forefront of professional practice.



# We are UCR...



## **Committed to your Career Ambitions**

Our personalised teaching offers an excellent level of attention to your individual learning styles and offers tailored academic delivery, guidance and support. You will have access to regular contact with industry-experienced lecturers, all of whom hold your success at the heart of their teaching.

## **Rated Gold**

We are rated Gold in the Teaching Excellence Framework in recognition of our students from all backgrounds achieving outstanding outcomes. This means that we provide you with the specific skills needed to give you the very best opportunities for future employment and career progression.

## **A First-rate Facility**

Our state-of-the-art building opened in 2018 with the aim of providing an outstanding learning environment for local people. Our wide range of modern facilities are dedicated and designed to enhance your studies seamlessly. You can access the latest research for your subject in our cutting edge two-storey library and catch-up with your classmates in our modern café and variety of social areas, including our outdoor amphitheatre.

## **A Competitive Choice**

Our full and part-time courses cost less on average than traditional Higher Education providers, allowing you to gain higher-level qualifications on your doorstep whilst building substantially less debt than at traditional universities.

Our higher-level and degree qualifications are accredited by partner universities including Sheffield Hallam University and University of Hull. This ensures you have access to a range of excellent courses locally, giving you the ability to juggle existing commitments around study.

# Locations and courses to suit you...



**University Centre Rotherham is part of the RNN Group alongside Rotherham College, North Notts College, Dearne Valley College, RNN Training and a number of other subsidiary training organisations.**

This means that we can offer a range of top-quality Higher Education courses in our local communities across South Yorkshire and North Nottinghamshire. Studying with us grants you access to our excellent facilities and student services across all of our campuses.



**Further details of course locations can be found on each of the course pages.**

For more information about any of our Colleges, please visit:

Rotherham College [www.rotherham.ac.uk](http://www.rotherham.ac.uk)  
North Notts College [www.nnc.ac.uk](http://www.nnc.ac.uk)  
Dearne Valley College [www.dearne-coll.ac.uk](http://www.dearne-coll.ac.uk)

## Rotherham College

**Rotherham College is based in the town centre and features industry-standard facilities and state-of-the-art equipment.**

We specialise in technical and career-focused training and education, ensuring you gain high-quality training and hands-on experience to nurture the crucial skills needed for your future career. We offer a range of higher-level qualifications including Engineering, Media, Moving Image and Photography and Hair and Media Make-up.

Beyond our excellent learning facilities, Rotherham College also boasts an on-site hair and beauty salon, two cafés, and a training and commercial restaurant, The Wharnccliffe, where you can enjoy a range of appetising cuisine prepared by our catering students.

## North Notts College

**North Notts College is the leading provider of education and training in the North Nottinghamshire area, offering a range of higher and degree qualifications in subjects such as Early Childhood Studies, Specialist Make-up and Sport Science.**

Our Higher Education courses are delivered in Worksop and at the Retford Post-16 Centre, allowing access to higher-level courses within Retford, Worksop and nearby areas.

We have a number of industry-standard facilities that we continually invest in to ensure our learners leave us fully prepared for the workplace.

North Notts College and the Retford Post-16 Centre offer free parking onsite for all learners.

## Dearne Valley College

**Dearne Valley College serves the communities of Rotherham, Barnsley and Doncaster, increasing access to higher-level courses and skills.**

We deliver a number of qualifications in areas such as Animal Management, Counselling, Public Services and Sport Science on our small, friendly campus.

We're known for providing our students with a first-class learning experience and helping prepare them for a career within their chosen industry.

Studying with us means you'll have access to an excellent range of first-rate facilities including an on-site sports and fitness centre, multisport cages, 3G Astro turf pitch and specialist mammalian, reptilian and avian housing, as well as free parking, an on-site nursery and café.

# Campus Locations

## University Centre Rotherham

UCR is our university centre located on Doncaster Gate, in the heart of Rotherham.

UCR

### University Centre Rotherham

Doncaster Gate  
Rotherham  
S65 1DA

## Rotherham College

Rotherham College is located centrally within Rotherham Town Centre.

RC

### Rotherham College

Eastwood Lane  
Rotherham  
S65 1EG

## North Notts College

North Notts College is located in Worksop and is a partner of the Retford Post-16 Centre (also referred to as the Diverse Education Centre).

WC

### Worksop Campus

Carlton Road  
Worksop  
S81 7HP

RP

### Retford Post-16 Centre

Old Hall Drive  
Retford  
DN22 7EA

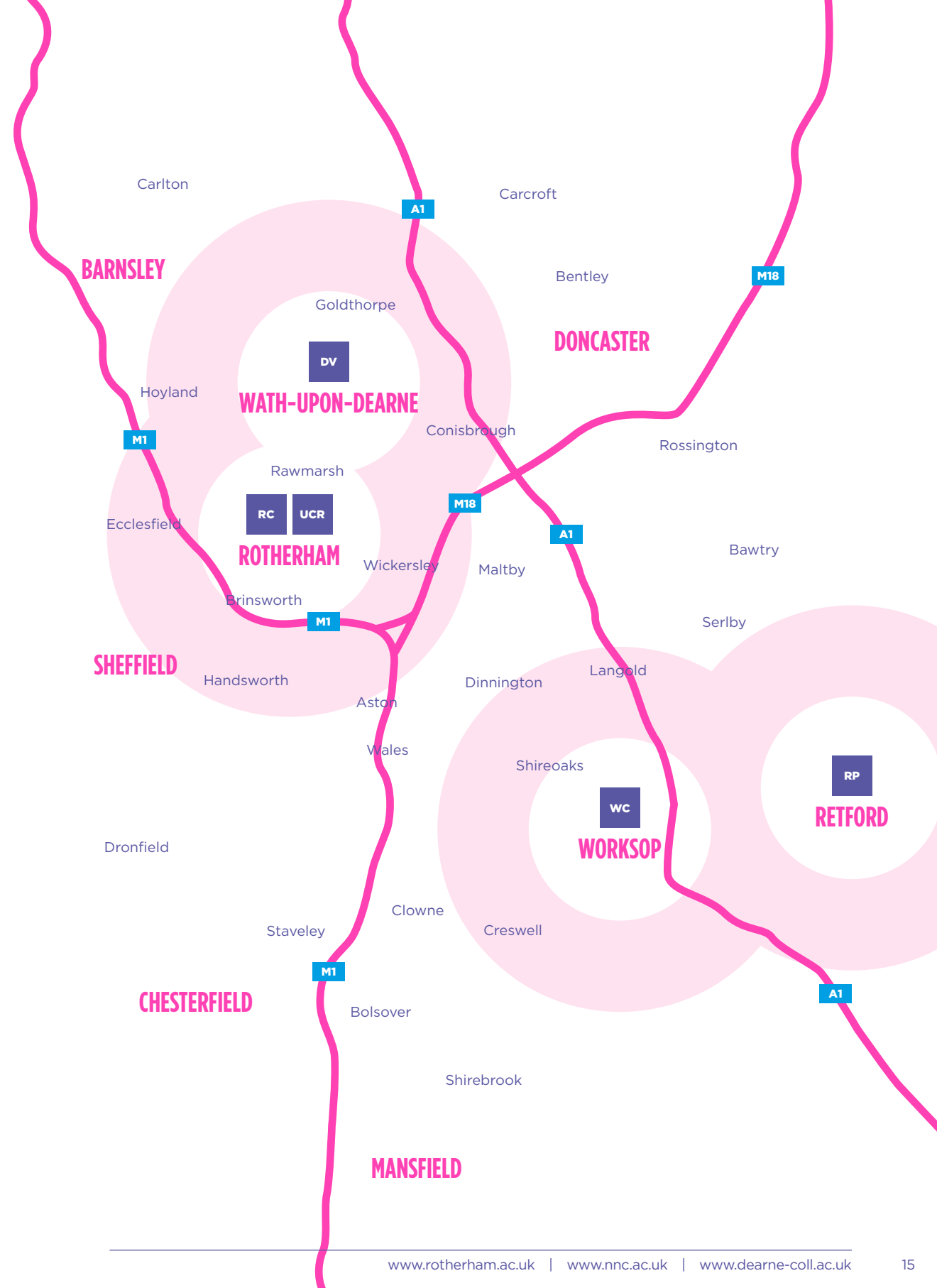
## Dearne Valley College

Dearne Valley College is based in Wath-upon-Dearne in Rotherham.

DV

### Dearne Valley College

Wath-upon-Dearne  
Rotherham  
S63 7EW







# Why study with us

## Study Locally

With us you can study a degree on your doorstep. You're able to keep living at home, save additional money and comfortably accommodate your studies around existing commitments.

## Degrees Accredited by Top Universities

Our degree and higher-level qualifications are accredited by partner universities including Sheffield Hallam University and University of Hull, giving you access to top-quality Higher Education courses closer to home.

## Friendly Campus Community

You'll have access to our purpose-built Higher Education campus, University Centre Rotherham (UCR), based near our Rotherham College Town Centre Campus. You'll benefit from our small class sizes full of determined like-minded classmates and learn within a friendly, tight-knit academic community dedicated to supporting your development.

## Competitive Degrees, Competitive Fees

Our TEF Gold standard courses are excellent value for money; we offer lower fees than most traditional universities that charge £9,000 per year or over. We don't substitute quality for cost - you just pay less for a fully accredited degree awarded by one of our partner universities.

## First-rate Facilities

Our state-of-the-art modern facilities reflect real working environments and standards. Equipped with the latest resources, you can develop the sought-after skills needed for success in today's workplace.

## Industry Experienced Teaching Professionals


Our talented team of lecturers bring with them expert knowledge in their fields and a breadth of experience to their teaching. Our specialist staff are passionate about your development and place your success at the heart of everything they do.

## We Support You

With us you won't get lost in the crowd. We take the time to get to know you as an individual and provide levels of one-to-one support and guidance tailored to your needs. Our supportive and caring Student Services team and HE Achievement Coaches are happy to help you stay on track with your studies and overcome any obstacles you may face.

## Flexible Learning

We offer courses on both a full and part-time basis so you can fit studying alongside your existing commitments. Some of our full-time courses are delivered over only one to two days a week (depending on subject area). This allows full-time courses to be accessible if you're busy but want to develop your skills and knowledge in something you're passionate about.

Look for the  symbol next to our course descriptions throughout this prospectus to discover courses you can study over two days or less.

## Excellent Employer Links

Our extensive employer links ensure that our curriculum matches that of local and regional skill needs as well as offering you experience and future employment opportunities. You'll be able to participate in guest speaker sessions, visits from industry experts and live projects to set up the contacts, knowledge and mindset needed for a lifetime of opportunity.

## Fantastic Student Experience

Our student experience is one of a kind. As a valued member of our learning community, your development and wellbeing will be tended to by our friendly teams of staff along with your classmates.

You can raise your voice on campus by volunteering as a Student Ambassador to support with Open Events, run for a role in the Student Union or become a Student Voice Representative - all while building your CV and employability skills.

Our enrichment activities also provide you the opportunity to try new things, develop new skills and meet a variety of new people outside of the classroom.

# Join a thriving local student community.

**We believe that everyone should have access to higher-level and degree qualifications to help them achieve their ambitions.**

**There are several brilliant benefits from studying locally, such as:**

### **Close Connections**

Our state-of-the-art university centre is just a ten-minute walk from Rotherham's central train and bus stations and next to multiple car parks, allowing easy access to our wide range of courses and facilities.

### **Investing in Your Community**

We're proud to deliver degrees in the heart of Rotherham, contributing to the regeneration of the town and region by helping you realise your potential.

### **Saving Money**

With our tuition fees ranging from £3,000 to £7,000 per year, you can save money by staying at home, as we charge considerably less than the average £9,000-a-year degree required by most traditional Universities.

### **Catered to Your Commitments**

By gaining a degree or higher-level qualification on your doorstep with us, you can tailor your time and fit study around existing commitments.



We pride ourselves on our commitment to **your success**. It's no coincidence that we've been awarded Gold in the Teaching Excellence Framework. We believe in **your learning** and ensure that our students from all backgrounds achieve outstanding outcomes.

### We think learning should be...

#### More than a classroom

Our classrooms may be kitted out with the latest resources and equipment, but this plays only a part in your learning. We believe that the key to creating a special learning environment is in fostering a tight-knit academic community. Brimming with brilliant minds, our talented teams of specialist staff personalise their teaching delivery to smaller-than-average class sizes.

Variety is important, and you'll have the opportunity for plenty of individual and group work. You'll be able to take control of your own learning and push yourself to reach your potential along with your like-minded determined classmates.

Outside of the classroom, you can enjoy any of our other first-rate facilities. Our modern campus has an impressive two-storey library, equipped with a wide range of physical and digital resources; you can also book out laptops from our Student Services team. You can catch up with your classmates in our spacious café and social areas throughout our building, in addition to an outdoor amphitheatre.

#### All about your development

Our tailored teaching approach offers an excellent level of attention to your individual learning styles and offers personalised academic delivery, guidance and support. You'll have access to regular contact with lecturers, many of whom are industry-experienced and apply real world knowledge to what they teach.

Most importantly, all of our staff are completely committed to your development and we hold your success at the heart of everything we do.



# How we can Support you...

**We're that helping hand and friendly face to ensure you make the most of your learning journey.**

## **Student Support**

Through our Student Services team you can book rooms and resources to make the most of your learning. We can also direct you to relevant staff who are happy to provide tailored support, including course guidance, financial support, sexual health advice, help to stop smoking and additional learning support. For more information, please visit pages 36-37.

## **We Listen to You**

Your voice matters. We strive to ensure that you have a fulfilling study experience and feel supported every step of the way.

Our staff are always happy to chat through any of your concerns and queries. This could include support from our teaching staff, our Higher Education Achievement Coach, or our highly skilled Mentors and Counsellors.

We encourage students to have ongoing input into ensuring an inclusive learning experience, by being part of our Student Voice and Student Representative schemes.

## **Disability Support**

If you have a disability which affects your study, we will work with you to put an Additional Support Plan in place to ensure you have the right reasonable adjustments. We can also help you to access Disabled Student Allowance if it is appropriate for you.



# Excellent employer links.



## **Gain essential experience with our extensive employer links**

Our hands-on courses, delivered by industry-experienced lecturers, allow us to build a network of links with employers from a range of industries. Our employer links ensure that our curriculum matches the requirements of local and regional skill needs, and offers you the chance to gain valuable work experience.

## **Our Employer Network, Your Future**

Our links with businesses ensures that we can provide industry placements and work experience to our students with local and regional employers. This ensures you gain vital hands-on experience and the opportunity to build connections and boost your employment prospects.

## **Guest Lectures and Live Projects**

Throughout your studies you'll have the opportunity to hear from industry guest speakers. As many of our lecturers remain active in their industries of expertise they often access a range of experts to give students a regular schedule of live project briefs and opportunities to undertake industry placements.

## **Career Advice**

You'll have access to a wide range of career advice and support to secure placements or work experience. We can also help you progress your CV and provide interview advice and guidance on completing application forms. Whatever support you need, you'll find it through our team dedicated to your development.

# A local launch to your future.

**Deciding what to do at the end of College or Sixth Form is a big decision. Choosing to continue your studies on a higher or degree level course is exciting, but it can also bring concerns and worries about moving away from home or landing yourself in student debt.**

If you have big dreams, but like the idea of staying close to home, we put students like you at the heart of everything that we do.

We are a local provider, based in the heart of our communities, that offers a range of higher-level and degree qualifications accredited by top universities, such as the University of Hull and Sheffield Hallam University.

With us you can gain a top-quality degree at lower-than-average fees. But that doesn't mean we compromise on quality; with our gold standard learning delivered by experienced lecturers in industry-standard facilities we'll help you meet your career ambitions all whilst you study smart and stay local.

We pride ourselves on our student experience and our small, friendly campuses mean that you'll be recognised as an individual. You'll learn in a supportive and relaxed environment in smaller class sizes compared to other traditional universities – meaning you get more, and better, access to one-to-one support and guidance.

# Ambition has no age limit.

**Could a return to education boost your career prospects, give you more confidence or help you gain the qualification you always wished you'd got? We're here to help.**

If you're 21 or over and looking to return to education you could join our mature student population. Over 50% of our students are over 21, with a wide range of motivations that brought them back to education.

University Centre Rotherham and all of our College campuses are within easy access of local amenities and public transport. This makes us the ideal choice for mature learners looking to ease back into education and gain higher and degree level qualifications, right on their doorstep.

Many of our courses are delivered over just a few days of the week, including some on evenings, making them ideal for people who need to fit studying around busy family lives and employment.

Our smaller class sizes, compared to traditional universities, and network of existing mature students make the transition to higher-level study smooth and supportive. We'll ensure you can access any support you need, and we'll always have a friendly face available to offer guidance.

Many mature learners, just like you, have joined us on their study journey and not only thrived on their return to education, but enjoyed the experience of being part of our student community and meeting new people.

Look for the 🕒 symbol next to our course descriptions throughout this prospectus to discover courses you can study over two days or less.



“The quality of teaching is excellent and the tutors are very helpful.”

**Caroline Wilkinson**  
Certificate of Education: Pre-Service

# A day



**Harrison Martin**  
Bachelor of Arts (Hons)  
in Media, Moving Image  
and Photography

“ I’ve recently got a high first mark, all thanks to the encouragement and support from my tutors. ”

- 6.45am** “I’ll get up, wash, brush my teeth have something to eat all by 7.10am so I can catch my bus at 07.20am to arrive in Rotherham town centre at 8am. I like the ride in as it’s time to listen to a bit of my Spotify daily mix, check out YouTube and snippets of some interesting podcasts.”
- 8.30am** “This is when I walk into UCR. After getting off the bus, I’ll sometimes have an amble around the centre for a bit and grab a hot drink; UCR’s only a few moments from my bus stop.”
- “When on campus, I’ll chill in one of the social areas for a short while before heading up to my classroom. It gives me time to get settled in for the day for a while before my lessons start.”
- 9am** “My lessons start and involve short presentations, work assignments and some good back and forth with my classmates and teacher.”
- “My hours can vary for each semester, though I’m typically in for two days a week.”
- 12pm** “After lessons, I’ll grab some food either downstairs at the café or down the road at one of the big stores. I’ve also got time to crack on with some work outside of lesson time.”
- “Once I’ve had some food, I’ll usually head into the library, check out some resources I may need that day and brainstorm ideas with some of my classmates. We chat, catch up and bounce ideas between each other about how we think our project at the time’s going.”
- Evening** “Once at home, I sometimes work until about 6pm or 7pm and call it a day there where I can chill out.”
- Days not at UCR** “On weekdays, I’ll sometimes work from roughly 10am until about 5pm. This can involve editing footage and film, applying finishing touches and gives me the time to get my films to a standard I want them to be at. Every now and then I’ll start much later and work until night – it’s quite flexible.”



**Jane Cole**  
Bachelor of Science (Hons)  
in Computing and Systems  
Development

“ I’m able to dedicate days to study around my work and other responsibilities. ”

- 6.30am** “I wake up, get ready and catch the bus at 07.20am. On the bus I listen to music (I really like Thunder and White Snake!) and read e-books on computing information such as cybersecurity and python.”
- 8am** “I arrive at UCR and have time to comfortably get breakfast. I’ll get to the library for about 8.30am which gives me time to check my emails, get my priorities in order for the day and make sure I’m fresh for lesson.”
- 9am** “My lessons start and I run through what I’m learning and get a lot of good raw information and interactive learning time. I can take my break as and when I want to which is great; there’s a level of trust from the teachers for us to take accountability for our learning.”
- Outside of lesson time** “I put in a fair few hours outside of the classroom, because at the end of the day this is something I enjoy and would like to achieve a good mark in. I do 16 hours per week part time, so usually allow myself a Monday, Tuesday and Sunday to work on my course.”
- “I can put in some time at UCR’s library, as there are no distractions you could get at home so I’m able to make decent progress on any projects I have.”
- “I treat my home commute as time to wind down, play some games on my phone or read a paper!”

# in the life of...



# Earn a salary, pay **no fees** and apply your learning in the workplace.

**Higher and degree apprenticeships are an exciting way to gain a sought-after qualification and boost your career prospects.**

Higher and degree apprenticeships can be a hands-on approach to getting started in your career, or give your existing career a boost by consolidating your know-how with new knowledge and skills.

We design and deliver our apprenticeships with key local businesses. This ensures you're equipped with the essential experience and skills needed for success in your industry of choice.

As with other apprenticeships, you'll be employed for a minimum of 30 hours per week and the costs of your apprenticeship are paid by your employer. This is usually paid through their apprenticeship levy payments or with up to 95% Government-backed funding.

Higher and degree apprenticeships at Levels 4, 5 and 6 are equivalent to a Foundation Degree or above.



## What can I study?

We currently offer higher and degree apprenticeships including:

**Business Management**  
including Level 6 Chartered Manager Degree Apprenticeship

**Construction**

**Engineering**

**Healthcare**

**Human Resources**

To keep up to date with our latest offer, visit: [ucr.rotherham.ac.uk](http://ucr.rotherham.ac.uk)

## How do I apply?

If you're already in work we advise you to ask your employer if they will support you through an apprenticeship; they may have access to Government funding or pay the Apprenticeship Levy.

If you aren't currently working we can help you find an employer offering higher and degree apprenticeship vacancies.

Contact our dedicated Apprenticeship Recruitment team.

Phone:

**01709 513147**

(South Yorkshire office)

**01909 504777**

(North Nottinghamshire office)

Email: [enquiries@rntraining.co.uk](mailto:enquiries@rntraining.co.uk)

# What Our Students Say.

**“ There is lots of work experience to get involved in and the course is very creative. ”**

**Emily Coggins**  
BA Hons in Media, Moving Image and Photography

**“ I would recommend UCR as the tutors are very clear and helpful when delivering sessions. ”**

**Danielle Staveley**  
Foundation Degree in Professional Practice in Health and Social Care

**“ UCR is a great University which offers diversity and quality in teaching. ”**

**Caroline Wilkinson**  
Pre Cert Ed in Education

**“ I love that I am able to study the course I am passionate about right on my doorstep. ”**

**Jak Coates**  
BA (Hons) in Theatre, Acting and Performance

**“ UCR is convenient for me to get to, has smaller groups to learn amongst, engaging lessons and we receive more one-to-one support from our tutors. ”**

**Latifah Ali**  
BSc Hons in Computing and Systems Development

**“ I enjoy working and collaborating with live clients, working on live briefs to show our skills. ”**

**Humairaa Hussain**  
Foundation Degree in Graphic Design

# Student Loans.

## Tuition Fee Loans

Our full-time courses and some of our part-time courses are eligible for funding via the Student Loans Company, and this is how most of our students fund their tuition fees.

**Student loans are repayable for graduates from the April following the completion of your course and only when your earnings rise above £27,295 per year.**

This equates to income earnings over £524 per week, or £2,274 per month. This will be deducted from your salary in the same way that tax and national insurance payments are deducted.

For more information on eligibility, the application process and repayment, please visit [www.slc.co.uk](http://www.slc.co.uk)

## Maintenance Loans

You may be eligible for loans and grants to support with living costs during your studies. For more information on eligibility, the application process, potential grants and repayment, please visit [www.slc.co.uk](http://www.slc.co.uk)

## Advanced Learner Loans

Advanced Learner Loans are tuition fee loans designed for students aged 19 or above\*, who are undertaking eligible Level 3 to Level 6 courses. This funding route may be an option for students applying for one of the Level 3 Access to Higher Education courses. More information about the Advanced Learner Loans can be found at [www.gov.uk/advanced-learner-loan](http://www.gov.uk/advanced-learner-loan)

For students who aren't able to access tuition fee loans, we offer flexible repayment options.

\*If you are aged 19 - 23 years old and studying your first Level 3, you will not pay tuition fees.



# Other Support.

## College Bursary

Across all of our colleges and University Centre Rotherham we are able to support learners with additional costs associated with learning e.g. travel and equipment. Students with an Advanced Learner Loan may be eligible for the college bursary.

## Childcare Grant

Full-time Higher Education students with children can apply for a Childcare Grant to help with childcare costs for children under 15, or under 17 if they have special educational needs.

You must be eligible for student finance to apply for a Childcare Grant. For further information and eligibility criteria, please visit [www.gov.uk/childcare-grant](http://www.gov.uk/childcare-grant)

## Disabled Students' Allowance (DSA)

It may be possible to receive financial support to cover any additional study related costs you encounter. If you have a sensory or physical disability, a medical condition, mental health difficulty or a specific learning disability, such as Dyslexia or Dyspraxia, you may qualify to apply for support. DSA is available to both new and existing students, full-time or part-time and has no age limit. It may be able to support top-up costs for laptop purchases. If you qualify for DSA then you will need to have a DSA Needs Assessment to establish the support you will require on your course.

Once you have received your letter from the funding body advising you that you are approved for funding, you will need to arrange a needs assessment appointment. To locate an assessment centre that is most convenient for you, please visit [www.gov.uk/disabled-students-allowances-assessment-centre](http://www.gov.uk/disabled-students-allowances-assessment-centre)

## HE Hardship Fund

Learners who are struggling financially towards the end of term may be eligible for hardship support. This is a one-off payment to support in times of need. To be eligible, students must have all means of financial support through Student Finance England in place and will need to provide evidence of household income.

**To find out more about Financial support call us on 01709 722777 or email [StudentFinancialSupport@rotherham.ac.uk](mailto:StudentFinancialSupport@rotherham.ac.uk)**



# Entry Requirements.



## Want to know if you can apply for what you'd like to study?

We list entry requirements on all course pages. You'll be interviewed to assess your suitability for the course; relevant work experience is also considered on an individual basis.

Some of our courses require certain amounts of UCAS tariff points. These can be found on each course page.

Wondering how many UCAS tariff points your qualifications are worth? The table opposite shows current UCAS tariff points for some popular qualifications. You can also calculate your points via the UCAS tariff point calculator at: [www.ucas.com/ucas/tariff-calculator](http://www.ucas.com/ucas/tariff-calculator)

AS Level	A Level	BTEC Extended Diploma	BTEC Diploma	BTEC Subsidiary Diploma	BTEC Certificate	Tariff Points
		D* D* D*				168
		D* D* D				160
		D* D D				152
		D D D				144
		D D M				128
		D M M	D* D*			112
			D* D			104
		M M M	D D			96
		M M P	D M			80
		M P P	M M			64
	A*			D*		56
	A	P P P	M P	D		48
	B					40
	C		P P	M		32
					D*	28
	D				D	24
A						20
B	E			P	M	16
C						12
D						10
					P	8
E						6

UCAS tariff points are not the only way of applying for our courses. All applicants are invited to an interview to assess their suitability for the course; relevant work experience is also considered on an individual basis.



# Find the right course level for you.

## Course Levels Explained

Level 3	<b>Foundation Year</b>	Access to Higher Education courses are available if you do not meet the entry requirements or are looking for a career change. You will study for one year in preparation to study a Higher Education course.
Level 4	<b>Higher National Certificate (HNC)</b>	This is the first year of a degree in a subject and equips you with the knowledge and skills for employment in your chosen field. An external body awards this qualification.
Level 5	<b>Higher National Diploma (HND)/ Foundation Degree</b>	Studying at Level 5 provides you with advanced employability skills by building on practical knowledge of your chosen course.
Level 6	<b>Top-up/ Bachelors Degree</b>	Completing a Bachelors Degree, through either three full years of study or a one-year Top-up, provides you with a holistic understanding of your specialist subject.
Level 7	<b>Masters Degree</b>	This one-year course enables you to further specialise in an area once you have completed a Bachelors Degree. This includes a PGCE course as a route into teaching.

Please see the relevant course information pages for further detail on your chosen level of qualification.

**We are proud to offer a range of higher-level and degree qualifications. Your starting point depends on your existing qualifications.**

# The Application Process.

You can apply to study a course at any of our campuses or Colleges specialising in your chosen subject. Our sites include University Centre Rotherham, Rotherham College, North Notts College and Dearne Valley College.

## Contact Details

University Centre Rotherham  
Website: [ucr.rotherham.ac.uk](http://ucr.rotherham.ac.uk)  
Email: [ucr@rotherham.ac.uk](mailto:ucr@rotherham.ac.uk)  
Phone: **01709 722806**

Rotherham College  
Website: [www.rotherham.ac.uk](http://www.rotherham.ac.uk)  
Email: [info@rotherham.ac.uk](mailto:info@rotherham.ac.uk)  
Phone: **01709 362111**

North Notts College  
Website: [www.nnc.ac.uk](http://www.nnc.ac.uk)  
Email: [contact@nnc.ac.uk](mailto:contact@nnc.ac.uk)  
Phone: **01909 504500**

Dearne Valley College  
Website: [www.dearne-coll.ac.uk](http://www.dearne-coll.ac.uk)  
Email: [learn@dearne-coll.ac.uk](mailto:learn@dearne-coll.ac.uk)  
Phone: **01709 513355**



**We look forward to hearing from you.**



## 1. Search

Find a course that interests you in this guide or by visiting our website at: [ucr.rotherham.ac.uk](http://ucr.rotherham.ac.uk)

Why not visit us at one of our **Open Events**, speak to course tutors and view our facilities?

**You can see our Open Event dates overleaf.**

## 2. Apply

You can apply for some of our courses via UCAS at: [www.ucas.com/students](http://www.ucas.com/students), using 'University Centre Rotherham', 'RNN Group', or our centre code 'R52'.

**OR Apply through our website** Complete our application form at any time throughout the year via our websites.

## 3. Interview

You will be invited to an interview to ensure that the course is right for you. During your interview, you'll meet the teaching team and can ask any questions and discuss any Additional Learning Support requirements.

You may also be required to bring along proof of your qualifications, a portfolio of work and/or audition as part of your interview process. Please note that interviews will be held in accordance with government guidelines regarding health and safety.

## 4. Offer

If you are successful at the interview stage, you'll receive either an unconditional or conditional offer for a place on the course. A conditional offer may be subject to exam results and references.



## Open Days

[ucr.rotherham.ac.uk/open-events](http://ucr.rotherham.ac.uk/open-events)

### 2021

#### Wednesday 19th May

3.00pm – 6.00pm

#### Wednesday 14th July

3.00pm – 6.00pm

#### Wednesday 29th September

3.00pm – 6.00pm

#### Wednesday 24th November

3.00pm – 6.00pm

### 2022

#### Wednesday 12th January

3.00pm – 6.00pm

Our dedicated virtual Open Event website also contains videos by specialist curriculum staff detailing the overview and benefits of their programmes of study. You can explore them here:

<https://ucr.events.rotherham.ac.uk>

# Find out more...

### Other Ways to Explore your Options

We're always happy to talk with you about your future.

**Guided tours** can be provided of our study and social facilities.

**Have an individual talk** with one of our specialist staff for any queries surrounding courses, funding and financial information or student support.

**You can contact us** to request a tour, individual talk or ask any other queries using the contact information provided below.

### Get in Touch

[ucr.rotherham.ac.uk](http://ucr.rotherham.ac.uk)

 **University Centre Rotherham - UCR**

 **@universitycentrerotherham**

 **@RotherhamUni**

 **@RotherhamUni**

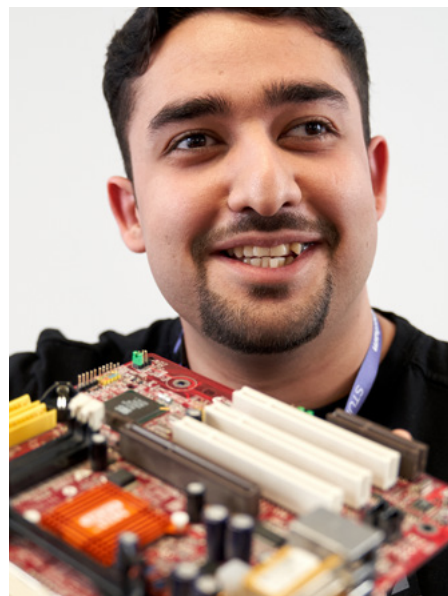
 **University Centre Rotherham (UCR)**

**01709 722806**



# Courses

Access to Higher Education (HE)	48
Accounting, Business and Management	56
Animal Management	60
Arts	62
Caring Professions	68
Computing and Digital	74
Construction	78
Education	80
Engineering	88
Hair and Beauty	92
Media and Photography	96
Performance	100
Public Services	104
Sport	106
Course Index	110



We make every effort to ensure the information within our Higher Education Prospectus is accurate and a true representation of the courses we are offering in 2021-22 and 2022-23. However, we do reserve the right to make changes if necessary.



# Access to Higher Education

## Access to Higher Education (HE)

### Art and Design

Access to HE Diploma:  
Art and Design Level 3

#### Awarding Body

Certa

#### Course Duration

1 year — full-time

#### Course Fee

£3,928

#### Apply online via

Our college websites

#### Location

Rotherham College

#### UCAS Points

N/A

### Course Overview

This one-year course will enable you to generate a portfolio of art and design work to support your progression onto university-level study. It will provide you with a valuable introduction to explore a wide range of creative disciplines before specialising.

This course will re-introduce students aged 19 and above to art and design practice and prepare them for the transition onto study at Higher Education level.

### Modules Covered

- Fine Art, Painting and Drawing
- Fashion, Costume, Textiles and Printmaking
- Graphic Design and Illustration
- 3D Design and Sculpture
- Contextual Studies

### Why Study With Us?

Throughout the academic year, there will be masterclasses, educational visits and exciting opportunities for you to work on live briefs.

You will receive support and guidance from tutors with expert knowledge of the creative industries, who are practitioners and have a good understanding of business practice.

Our excellent resources and studios will give you the opportunity to develop your skills to reach your full potential.

Assignment briefs will challenge and encourage you to develop your specialist skills in order to progress to work as a practitioner, gain employment within the creative industries or onto further study.

### Career Opportunities

This course supports your progression onto university-level study. Following study at Higher Education within art and design you could go into a number of careers including Fine Artist, Illustrator, Animator, Graphic Designer, Fashion Designer, Textiles Designer, Architect, Interior Designer or Product Designer.

### Entry Requirements

- GCSE English and maths at grade C/4 or above or equivalent (desirable)
- Successful interview with a course tutor
- If English is not your first language you must have an IELTS score of 6.0 with a minimum of 5.5 in all key skills or equivalent
- You must be 19 years or over

## Art and Design

Foundation Diploma in Art and Design

**Awarding Body**  
University of the Arts London

**Course Duration**  
1 year — full-time

**Course Fee**  
£6,900  
This course is free to under 19-year olds

**Apply online via**  
Our college websites

**Location**  
University Centre Rotherham  
Rotherham College

**UCAS Points**  
N/A

### Course Overview

By choosing this qualification you will perfect your skills and build a portfolio of artwork bridging the gap between study at Level 3 and degree level study.

You'll gain a valuable introduction to a wide range of creative disciplines, which allows you to experiment before specialising in your chosen area and enables you progress onto a range of prestigious, highly competitive degree courses in art-based specialisms.

Whilst using Adobe Photoshop, Illustrator and Animate, you'll explore the principles and fundamental theories of art and design so you can specialise in a particular area of interest.

On completion you will gain the following UCAS Tariff points: 80 for a Pass, 96 for a Merit and 112 for a Distinction.

### Modules Covered

The course is in three parts:

- Part one allows you to explore your creative thinking through introductions to the main areas of art and design including fine art, graphic design/illustration, animation, fashion and textiles and 3D design
- Part two builds on the skills and understanding of the first part, allowing you to develop further your subject related skills.
- Part three allows you to become more independent as you plan and implement your own major project in preparation for study at degree level.

### Why Study With Us?

With access to professional standard studios and equipment, you'll work within industry-standard facilities and be taught by experienced professionals.

Your assignment briefs will challenge and encourage you to develop your specialist skills so you can progress to work as a creative practitioner.

There will be exposure to masterclasses, educational visits and exciting opportunities for you to work on live briefs. Visits include a major European city and galleries throughout the UK.\*

\*if Covid restrictions allow

### Career Opportunities

Once you have completed the course you can progress onto a creative degree at university in your chosen specialism. There are also a wide range of Higher Education courses available at UCR.

#### Careers

- Fine Artist
- Interior Designer
- Printmaker
- Product Designer
- Architect
- Curator
- Illustrator
- Textiles Designer
- Animator
- Ceramicist
- Digital Artist

### Entry Requirements

- A-Level at grade C or above in art or two AS Levels at grade C or above to include art
- GCSE English and maths at grade C/4 or above or equivalent
- Successful completion of BTEC/UAL Level 3 Extended Diploma in Art and Design
- A portfolio of artwork is desirable

## Computing

Access to HE Diploma:  
Computing Level 3

**Awarding Body**  
Certa

**Course Duration**  
1 year — full-time

**Course Fee**  
£3,928

**Apply online via**  
Our college websites

**Location**  
Rotherham College

**UCAS Points**  
N/A

### Course Overview

Studying this programme will allow you to build up your academic skills and confidence while providing you with the knowledge you need to progress onto studying computing in Higher Education at college or university. This one-year course is aimed at learners aged 19 or above.

### Modules Covered

- Components of Computer Systems
- Database Development
- Networks
- Project Development
- Software Development
- Spreadsheet Modelling
- Systems Analysis
- Website Design

### Why Study With Us?

You will work on live client briefs and be taught by industry professionals, who will guide you on your journey to becoming a digital practitioner. You will have access to our industry-standard facilities which includes PCs for stripping and re-building.

As well as gaining invaluable work experience, you will participate in projects such as PC repair clinics and code club and develop skills such as employability and team working.

There will be the opportunity for you to take part in national and global competitions as well as field trips, which have previously included visits to the Bradford Media Museum and gaming events.

### Career Opportunities

Upon successful completion of this course you may be eligible to begin a Higher Education qualification in a number of areas including computing, computer science, software engineering, business and IT, computer security networks and forensics, web development or games development.

Upon successful completion of this course you could go into employment as a Website Designer, Software Engineer, Network Technician, Data Analyst or Programmer.

### Entry Requirements

- GCSE English and maths at grade C/4 or above or equivalent
- Successful interview with a course tutor
- You must be 19 years or older

## Health Science Professions

Access to HE Diploma:  
Health Science Professions Level 3

### Awarding Body

Certa

### Course Duration

1 year — full-time

### Course Fee

£3,384

### Apply online via

Our college websites

### Location

University Centre Rotherham  
North Notts College — Worksop Campus  
Dearne Valley College

### UCAS Points

N/A

### Course Overview

This one-year programme is designed for adults wishing to progress to university to study professional degrees within the health and social care sector.

The course will equip you with the fundamental knowledge, skills and behaviours required to help you progress to the next steps to become the Social Workers, Nurses, Midwives, Paramedics and the Allied Health Professionals of the future.

### Modules Covered

- Biology/Science
- Psychology
- Health
- Study Skills

### Why Study With Us?

Our learners have successfully progressed onto a wide range degree programmes at a variety different universities across the country.

You will be encouraged to gain experiences linked to the health and social care sector, and to develop your knowledge, skills and behaviour specific to the subjects you are studying.

### Career Opportunities

Completing this course opens up opportunities to study courses including Adult Nursing, Biomedical Science, Occupational Therapy, Paramedic Practice, Physiotherapy, Radiotherapy and Oncology, Social Work and much more.

### Entry Requirements

- GCSE English and maths at grade C/4 or above or equivalent
- A Maths Functional Skills qualification may be accepted following discussion with the course leader

## Health Science Professions Fast-Track

Access to HE Diploma:  
Health Science Professions

### Awarding Body

Certa

### Course Duration

1 year — full-time

### Course Fee

£3,384

### Apply online via

Our college websites

### Location

Dearne Valley College

### UCAS Points

N/A

### Course Overview

This course is ideal for those interested in the science behind health and want to make a positive difference to people and their local communities.

It is a fast-track programme condensed into one year of study and is typically taught over two teaching days per week; some independent study will also be required. You will explore key subjects within health and science including biology, psychology, health and social policy, and study skills.

The qualification is equivalent to studying 3 A-Levels. It prepares adults with the knowledge, skills and behaviours for higher level study at university within health and science.

### Modules Covered

- Anatomy and Physiology
- Psychology
- Health and Social Policy
- Study Skills

### Why Study With Us?

Our experienced staff and supportive environment will help you to achieve your full potential. We have an excellent track record of students progressing onto Higher Education and into employment as registered Health Practitioners. We provide annual trips such as going to London to visit Body Worlds, which takes students through the journey of the human body, providing a fascinating insight into the body's complex structure and function.

In addition, we hold an annual Alumni Event where our current students can collaborate with our previous students, who provide advice and guidance as ambassadors of their universities and professions. In 2019/20, our Access to HE Diploma had a 100% Achievement Rate at Dearne Valley College, meaning all learners completed our programme.

### Career Opportunities

After completion of this course, learners have progressed onto the following courses (many of which lead to professional registration and employment):

- Nursing (Adult)
- Nursing (Mental Health)
- Nursing (Child)
- Midwifery
- Physiotherapy
- Paramedic Practice
- Social Work
- Occupational Therapy
- Diagnostic Radiography
- Radiotherapy and Oncology
- Operating Department Practice
- Nurse Associate
- Assistant Practitioner
- Biomedical Science
- Biology
- Criminology and Psychology
- Psychology
- Public Health and Nutrition
- Primary Education (5-11) with QTS
- Health and Human Sciences
- Professional Practice in Health and Social Care

### Entry Requirements

- GCSE English at Grade C/4 and above
- GCSE maths at Grade D/3 and above or Functional Skills Level 2 in maths
- You must be 19 years old or over

## Humanities and Social Sciences

Access to HE Diploma:  
Humanities and Social Sciences Level 3

### Awarding Body

Certa

### Course Duration

1 year — full-time

### Course Fee

£3,022

### Apply online via

Our college websites

### Location

University Centre Rotherham  
North Notts College — Worksop Campus

### UCAS Points

N/A

### Course Overview

This one-year course will allow you to build up your academic skills and confidence whilst providing you with the knowledge you need to progress to university.

This course is an ideal starting point for individuals looking for a career change or career development.

Upon successful completion of this course you will be eligible to begin a Higher Education qualification in a number of areas including social work, law, teaching, psychology and more.

### Modules Covered

A choice of specialist subjects depending on your chosen career route, including:

- English Language and Literature
- Sociology
- Psychology

As well as study skills covering:

- Essay planning and academic writing
- Referencing and note-taking
- Effective research strategies

### Why Study With Us?

We have an experienced team of tutors who have helped nurture a large number of very successful students. They will help, guide and prepare you for study at university.

### Career Opportunities

Successful students can progress onto Higher Education or into employment in private enterprise, local government and civil services or voluntary and charity organisations.

### Entry Requirements

- GCSE English and maths at grade C/4 or above or equivalent
- You must be 19 years or over

## Science

Access to HE Diploma:  
Science Level 3

### Awarding Body

Certa

### Course Duration

1 year — full-time

### Course Fee

£3,384

### Apply online via

Our college websites

### Location

University Centre Rotherham  
Rotherham College

### UCAS Points

N/A

### Course Overview

This one-year course will allow you to build up your academic skills and confidence whilst providing you with the knowledge you need to progress onto Higher Education.

This course is an ideal starting point for individuals looking for a career change or career development. Upon successful completion of this course, you will be eligible to begin a Higher Education qualification in science.

### Modules Covered

- Chemistry
- Physics
- Biology
- Maths
- Study Skills

There will also be sessions giving advice and guidance on the UCAS application process and developing a personal statement.

### Why Study With Us?

Our highly qualified and skilled staff are industry specialists and will support you to achieve your full potential and aspirations.

You will be able to develop a broad understanding of the wider spectrum of subjects in science.

### Career Opportunities

Following completion of this course you can go into further study at university level and go into employment in biomedical sciences, nutrition and dietetics, medicinal and pharmaceutical chemistry, radiography, optometry, ophthalmology, marine biology or forensic sciences.

### Entry Requirements

- GCSE English language and maths at grade C/4 or above. Level 2 equivalents, such as functional skills will be considered
- Successful interview with a course tutor
- You must be 19 years or over

# Accounting, Business and Management

## Accounting, Business and Management

### Accounting

ACCA (FIA) Diploma in  
Accounting and Business Level 4

 Delivered over two days or less

#### Location

University Centre Rotherham

#### Awarding Body

ACCA

#### Course Duration

1 year — part-time

#### Course Fee

£2,573 +ACCA registration fees

#### Apply online via

Our college websites

#### UCAS Points

N/A

### Course Overview

The ACCA Diploma in Accounting and Business is the highest level of ACCA's Foundation in Accounting suite of qualifications. The course provides a solid platform for progression onto the Chartered papers with appropriate exemptions.

### Modules Covered

- Foundations in Accountancy (FIA)
- Flexible Accountancy and Bookkeeping FAB
- FMA Management Accounting

### Why Study With Us?

All members of the teaching team have worked in the industry and are nationally recognised as an outstanding provider of accountancy tuition.

We have great links with the Rotherham and Barnsley Chamber of Commerce, local accountancy firms, the awarding bodies and national publications, all of whom support the work we are doing with future accountants.

### Career Opportunities

Upon successful completion of this course you could go into employment as a Management Accountant, Financial Accountant, Assistant Accountant, Payroll Officer, Senior Accounts Clerk, Financial Analyst or Ledger Supervisor.

### Entry Requirements

- Must have undertaken AAT/ACCA Level 2 and 3 or have extensive knowledge working in an accounting function

## Business and Management

Bachelor of Arts (Hons) in Business and Management

 Delivered over two days or less

### Location

University Centre Rotherham

### Awarding Body

University of Hull

### Course Duration

3 years — full-time

### Course Fee

£6,900 per year

### Apply online via

Our college websites  
UCAS Centre Code 'R52'

### UCAS Points

N/A

### Course Overview

This course covers the main functional areas of Business so is broad in approach and will provide diverse employment opportunities across business disciplines.

Enterprise is also a focus of the course for a creative approach towards Business and for those considering self-employment.

### Modules Covered

#### Year 1

- The Marketing Planning Process
- Accounting and Finance
- Business Environment
- Introduction to Contemporary Business Practices
- Applications for Contemporary Business Practices
- Introduction to Enterprise

#### Year 2

- Engaging with Enterprising Organisations
- Business Law
- Research Methods
- Financial Literacy and Awareness
- Managing People
- Integrated Marketing Communications

#### Year 3

- Specialism – Finance and Accounts, Marketing, Management/HR
- Business Improvement Strategy
- Literacy and Awareness
- Dissertation

### Why Study With Us?

Study at Level 4 (Year 1) and Level 5 (Year 2) will focus on the underpinning business knowledge required to understand how business disciplines interrelate. Level 6 (Year 3) will develop acquired knowledge and abilities to not only become an effective Business Manager, but also the entrepreneurialism to develop a start-up business.

The final year of the programme will develop research, and effective writing of the practical skills utilised to plan a business venture. Each student will develop a business plan and focus on a specialism in either Marketing, Human Resources Management or Accounting. Each student will write a dissertation on the practical skills used and the research required to develop a business venture and to execute it.

### Career Opportunities

Upon successful completion of this course you could go into self-employment, join a business start-up, secure a higher role within a business environment such as finance, or become a graduate trainee within an enterprise context.

### Entry Requirements

- Successful completion of a Level 3 programme (three A-Levels at C or above) or a BTEC (or equivalent) with a minimum Merit, Merit, Pass profile
- GCSE English and maths at C/4 or above (or Level 2 equivalent)
- Relevant work experience would also be an advantage and contribute to entry requirements for mature learner entry

## Tourism and Hospitality Management

Foundation Degree in Tourism and Hospitality Management

 Delivered over two days or less

### Location

University Centre Rotherham

### Awarding Body

Sheffield Hallam University

### Course Duration

2 years — full-time

### Course Fee

£6,900 per year

### Apply online via

Our college websites  
UCAS Centre Code 'R52'

### UCAS Points

N/A

### Course Overview

This flexible programme has been designed in collaboration with employers, students and staff in the tourism and hospitality sector.

It provides a robust programme to develop your skills and knowledge in the workplace and ultimately prepare you for a career in tourism and hospitality.

### Modules Covered

#### Year 1 (Core modules)

- Self-Analysis and Career Development
- Fundamentals of Marketing
- Work Based Learning and Employability
- Customer Service in the Tourism and Hospitality Sector
- Event Management

#### Optional modules include:

- International Travel Affairs (Tourism) or Licensed Trade Management (Hospitality)

#### Year 2 (Core modules)

- Managing Financial Resources
- Introduction to Business Research
- Leadership and Management

#### Optional modules include:

- Geography and Tourist Destinations (Tourism) or International Food Management (Hospitality)
- Airport and Airline Operations (Tourism) or Food Production and Service Management (Hospitality)
- Tourism Development (Tourism) or Enterprise for Hospitality (Hospitality)

### Why Study With Us?

Our industry-experienced teaching team employ a range of innovative teaching and learning methods to challenge you to improve your skills and knowledge. You will be given excellent support in pursuing aspirational careers, with many former students progressing into employment with highly-regarded organisations within the tourism and hospitality industry.

You may have the opportunity to attend various trips and visits throughout the duration of your course to add relevant experience to the programme. In addition, you will be entitled to Associate Member status of Sheffield Hallam University, offering access to their learning centres in Sheffield and use of the support services.

### Career Opportunities

Upon successful completion of this course you could go into employment as an Events Co-ordinator, Travel Advisor, Cabin Crew Staff, Customer Services, Front of House Staff or Hotel Manager/Supervisor.

Alternatively, top-up progression routes via Sheffield Hallam University for students who pass the Foundation Degree are International Tourism Management, International Hospitality Business Management, International Hotel and Resort Management and International Tourism and Hospitality Management. Students will be guided by College and University staff through elective choice to the appropriate top-up.

### Entry Requirements

- A relevant Level 3 qualification
- GCSE English and maths at grade C/4 or above or equivalent
- Satisfactory references

# Animal Management

## Animal Management

### Animal Management

Higher National Certificate -  
Diploma Level 4 in Animal Management

Higher National Diploma -  
Diploma Level 5 in Animal Management

 Delivered over two days or less

#### Location

University Centre Rotherham  
Dearne Valley College

#### Awarding Body

Pearson BTEC

#### Course Duration

1 year - full-time (per level)

#### Course Fee

£6,900 per year

#### Apply online via

Our college websites  
UCAS Centre Code 'R52'

#### UCAS Points

N/A

### Course Overview

The course provides you with a wealth of transferrable experience and employability skills either to take you straight into industry or onto further study.

The Pearson BTEC Level 5 Higher National Diploma is recognised by Higher Education providers as meeting admission requirements to many relevant Animal Management related courses, for example:

- BSc (Hons) in Animal Behaviour and Welfare
- BSc (Hons) in Animal Management
- BSc (Hons) in Applied Animal Science
- BA (Hons) in Equine Business Management
- BSc (Hons) in Equine Management

After completing a Pearson BTEC Higher National Certificate or Diploma, students can also progress directly into employment.

### Modules Covered

#### Level 4 HNC:

- Health and Welfare
- Animal Behaviour
- Managing a Research Project
- Animal Husbandry
- Managing Animal Collections
- Animal Nursing
- Animal Nutrition
- Business Environment

#### Level 5 HND:

- Biological Principles
- Research project
- Anthrozoology
- Therapy and Rehabilitation
- Evolution and Adaptation
- Advanced Patient Care
- Breeding and Genetics

### Why Study With Us?

Our lecturing staff have a wide range of expertise, having worked in a variety of animal-related industries and have many years of experience.

We have a broad range of animals at our Dearne Valley Campus, including livestock and exotics.

You will get the opportunity to be involved in the launch of our land-based retail outlet.

You'll study the theory side of your learning at University Centre Rotherham's modern campus and develop practical, hands-on knowledge at our animal housing facilities at Dearne Valley College.

### Career Opportunities

Upon successful completion of these courses you could go into employment as an Animal Keeper, Animal Controls or Health Officer, Animal Trainer, Animal Nutritionist, Animal Instructor or Animal Behaviour Consultant. You could also go into technician or academic roles, in animal science laboratories and lecturer capacities respectively.

There are also management role opportunities for veterinary practices, animal centres, pet stores, kennels and catteries.

### Entry Requirements

- A BTEC Level 3 qualification in Animal Management, Equine Management or another relevant subject
- A-Levels demonstrating a strong performance in a relevant subject
- GCSE English and maths at grade C/4 or above or equivalent

Mature learners with related work experience will be considered on an individual basis.

# Art and Graphics



“ I enjoy the opportunity to work with live clients and develop my hands-on skills. ”

**Humairaa Hussain**  
Foundation Degree in Graphic Design



## Fine and Applied Art

Bachelor of Arts (Hons)  
in Fine and Applied Art

**Awarding Body**  
University of Hull

**Course Duration**  
3 years — full-time

**Course Fee**  
£6,900 per year

**Apply online via**  
Our college websites  
UCAS Centre Code 'R52'

**UCAS Points**  
64

**Location**

University Centre Rotherham  
Rotherham College

### Course Overview

This stimulating, hands-on course comprises of practical workshops, lectures and gallery visits. The programme supports the development of your studio practice within fine art, craft, ceramics or textiles, with the option to specialise or work across disciplines.

Emphasis is placed upon creative experimentation with a variety of media and the development of individual ideas and approaches.

### Modules Covered

**Year 1**

- Visual Communication
- Studio Practice: Ceramics
- Contextual and Cultural Practice 1
- Studio Practice: Textiles
- Studio Practice: 3D Materials Exploration
- Studio Practice: Fine Art

**Year 2**

- Specialist Practice 1
- Contextual and Cultural Practice 2
- Studio Practice: Live Brief
- Specialist Practice 2
- Professional Practice 1

**Year 3**

- Extended practice 1
- Dissertation
- Extended Practice 2
- Professional Practice 2

### Why Study With Us?

We provide smaller study groups with training from industry professionals in industry settings. Specialist facilities in screen printing, ceramics, 3D design and fine art will allow you explore a wide range of techniques and processes within the dedicated studio space to develop your practice.

Our connections will allow you to gain the latest skills and knowledge needed to be successful in the art and design industry.

You will be supported by staff who are experts in their field and encouraged to develop a resourceful and independent approach that will prepare you for artistic practice in the real world.

### Career Opportunities

Upon successful completion of this course, you could go into employment as a Fine Artist, Textiles Designer, Ceramicist, Community Arts Worker, Art Teacher\* or Art Therapist\*.

\*Requires further study and additional qualifications.

### Entry Requirements

- A relevant Level 3 qualification
- GCSE English and maths at grade C/4 or above or equivalent
- A portfolio of artwork

## Graphic Design

Foundation Degree in Graphic Design

**Awarding Body**  
Sheffield Hallam University

**Course Duration**  
2 years - full-time

**Course Fee**  
£6,900 per year

**Apply online via**  
Our college websites  
UCAS Centre Code 'R52'

**UCAS Points**  
N/A

**Location**

University Centre Rotherham

### Course Overview

This course will provide you with an opportunity for you to fulfil your creative ambitions and develop your understanding of current design practice.

You will gain an overview of the whole design and production process as well as the knowledge, understanding and skills to enter a range of careers in the graphic arts industries. Work-based learning is at the heart of this course and is embedded into the modules.

### Modules Covered

- Design Techniques and Processes
- Graphic Image Making and Communication
- Work-based Design Projects
- Specialist Creative Response

### Why Study With Us?

The teaching team have a range of experience from practice within the industry with local, national and international networks. They can offer real-world advice and guidance to help develop your practice. You will be based in our professional studio spaces which provide a stimulating learning environment. All fully equipped with the latest Mac and Adobe software. Live projects are set by local and national designers and creatives including Eleven Design and Human Studios. You can take part in regular visits to seminars at Sheffield Hallam University to see designers and creatives.

You will also have access to learning resources and online research materials. Students are offered placements to gain insight into the industry and to develop their professional practice. There's also the opportunity for field trips to local and international venues accompanied by a yearly residential to either Paris, Rome, Barcelona or New York.

### Career Opportunities

After successful completion of this course, you can pursue employment with in-house design teams and design agencies as a Graphic Designer or UX/UI Designer. You could work within branding, packaging, advertising, marketing, or alternatively you could become self-employed as a Freelance Designer.


### Entry Requirements

- A relevant Level 3 qualification or substantial relevant experience
- GCSE English and maths at grade C/4 or above or equivalent
- A portfolio of work
- All applicants who are non-native English speakers, or who have not studied the final two years of school in English, must have an IELTS score of 6.0 or above

 Delivered over two days or less

# Graphic Communication Design

Bachelor of Arts (Hons) in Graphic Communication Design (Top-up)

 Delivered over two days or less

## Location

University Centre Rotherham

## Awarding Body

Sheffield Hallam University

## Course Duration

1 year - full-time

## Course Fee

£6,900 per year

## Apply online via

Our college websites  
UCAS Centre Code 'R52'

## UCAS Points

64

## Course Overview

This course will provide you with an opportunity to fulfil your creative ambitions and develop your understanding of current design practice. It will equip you with the necessary knowledge, understanding and skills required for success and future employment in the graphic design sector.

## Modules Covered

### Part one

- Explore and study an area of interest such as Illustration, Typography, Branding or UX/UI design
- Explore and investigate a research topic that will provide the basis for practical work
- Construct a written project proposal on a research topic within a specialist practice
- Review and evaluate progress, analyse ongoing strengths and weaknesses
- Attend workshops, seminars and lectures by industry professionals
- Students are also encouraged to enter the Design and Art Direction, New Blood Student Awards each year, to enhance their professional practice and further develop a creative, professional quality portfolio of work

### Part two

- Research and production of a practical body of work
- Develop an ongoing professional practice by engaging with a range of institutions, local industry and commercial partners
- Graduation Project presentation at the Final Year Show at UCR. This is a celebratory event attended by friends, family, industry partners, local design studios and academic institutions

## Why Study With Us?

The teaching team have a range of experience from practice within the industry with local, national and international networks. They can offer real-world advice and guidance to help develop your practice. You will be based in our professional studio spaces which provide a stimulating learning environment. All fully equipped with the latest Mac/Adobe software.

Live projects are set by local and national designers and creatives including Eleven Design/Human Studios. You can take part in regular visits to seminars at Sheffield Hallam University to see designers and creatives. You will also have access to learning resources and online research materials. Students are offered placements to gain insight into the industry and to develop their professional practice. There's also the opportunity for field trips to local and international venues accompanied by a yearly residential to either Paris, Rome, Barcelona or New York.

## Career Opportunities

After successful completion of this course, you can pursue employment with in-house design teams and design agencies as a Graphic Designer or UX/UI Designer. You could work within branding, packaging, advertising, marketing, or alternatively you could become self-employed as a Freelance Designer.

## Entry Requirements

- A relevant Level 5 qualification
- GCSE English and maths at grade C/4 or above or equivalent
- Successful interview with a course tutor
- A portfolio of work
- All applicants who are non-native English speakers, or who have not studied the final two years of school in English, must have an IELTS score of 6.0 or above

# Caring Professions



“ I’m developing effective knowledge and skills tailored to my professional responsibilities in the Health and Social Care sector. ”

**Danielle Staveley**

Foundation Degree in Professional Practice in Health and Social Care

## Early Childhood Studies

Foundation Degree in  
Early Childhood Studies

**Awarding Body**  
University of Hull

**Course Duration**  
3 years — part-time

**Course Fee**  
£4,400 per year

**Apply online via**  
Our college websites  
UCAS Centre Code 'R52'

**UCAS Points**  
N/A

**Location**

University Centre Rotherham  
North Notts College - Worksop Campus

 Delivered over two days or less

### Course Overview

The course will provide an innovative response to specific sector needs for the professional development of Childminders, pre-school learning leaders and Early Years Practitioners. It can also allow progression to study the BA (Hons) Early Childhood Studies (Top-up).

### Modules Covered

**Level 4**

- Academic Study Skills
- Early Childhood Development
- Professional Reflective Practice: Listening and Learning Journeys
- Safeguarding and Promoting the Well-being of Young Children
- Social Inclusion and Early Childhood Education

**Level 5**

- Approaches to Research in Early Childhood Studies
- Children's Play and Creativity
- Professional Reflective Practice: Transitions and Critical Reflection on Alternative Pedagogies
- Research Report
- Inclusive Strategies for Children with SEND
- Professional Reflective Practice: Critical Reflection on Alternative Pedagogies

### Why Study With Us?

We have an excellent reputation within the early years and childcare sector. Our highly skilled and experienced staff team, and links with employers in the sector, will support you to achieve your full potential.

### Career Opportunities

Upon successful completion of this course you could go into employment as a Nursery Manager, Pre-school Leader, Teaching Assistant, Early Years Practitioner or a Family Support Worker.

### Entry Requirements

- A relevant Level 3 qualification in Early Years with license to practice status
- GCSE English and maths at grade C/4 or above or equivalent
- Hold a current Enhanced DBS
- Be employed within the sector in a relevant setting and role
- ICT access and skills to support online learning elements of the programme
- All applicants who are non-native English speakers, or who have not studied the final two years of school in English, must have an IELTS score of 6.0 or above

## Early Childhood Studies (Top-up)

Bachelor of Arts (Hons)  
in Early Childhood Studies (Top-up)

**Awarding Body**  
University of Hull

**Course Duration**  
18 months — part-time

**Course Fee**  
£6,900

**Apply online via**  
Our college websites  
UCAS Centre Code 'R52'

**UCAS Points**  
N/A

**Location**

North Notts College - Worksop Campus

 Delivered over two days or less

### Course Overview

This course is tasked to support students who are already practitioners to develop a wide range of skills and knowledge for the employment market.

Students on this course will enjoy a creative and innovative approach to learning.

### Modules Covered

**Year 1**

- International Perspectives in Education and Care
- Professional Practice Working with 0-5 years
- Creativity in Early Childhood
- Leadership and Management
- Independent Research Project

**Year 2**

- Dissertation (student choice of content centred on early childhood studies)

### Why Study With Us?

We have an excellent reputation within the Early Years and Childcare Sector. Our highly skilled experienced staff team, and links with employers in the sector, will support you to achieve your full potential.

### Career Opportunities

Upon successful completion of your course you could progress your studies toward the social care sector as a Family Support Worker or Counsellor, the care sector as a Child Psychotherapist, or be a Manager in the private, voluntary, health, maintained sector and more.

We recognise that you may wish to enter teaching or a similar profession on graduation. Throughout your degree you will develop skills, expertise and knowledge that will enable you to apply, with confidence for initial Teacher Training or a range of other professional education routes.

### Entry Requirements

- A relevant Level 5 academic study qualification
- GCSE English and maths at grade C/4 or above or equivalent

## Therapeutic Counselling

CPCAB Level 4 Diploma in Therapeutic Counselling

### Awarding Body

CPCAB

### Course Duration

2 years — part-time

### Course Fee

£4,670 per year

### Apply online via

Our college websites  
UCAS Centre Code 'R52'

### Location

Dearne Valley College

### UCAS Points

N/A

### Course Overview

The CPCAB Level 4 Diploma in Therapeutic Counselling is a progression programme that leads on from the CPCAB Level 3 Certificate in Counselling Studies. This programme is designed to provide you with the essential knowledge, skills and behaviours to work as a Therapeutic Counsellor in an agency context.

This programme focuses on practical development, applying your knowledge, skills and behaviours learned in seminars and through work-based learning, and has been developed to take account of the latest research findings on what makes counselling effective. This is underpinned by the CPCAB Model of Practitioner Development.

### Modules Covered

- Working Ethically, Safely and Professionally as a Counsellor
- Working Within a Counselling Relationship
- Working with Client Diversity in Counselling Work
- Working Within a User-Centred Approach to Counselling
- Working with Self-Awareness in the Counselling Process
- Working Within a Coherent Framework of Counselling Theory and Skills
- Working Self-Reflectively as a Counsellor

### Why Study With Us?

This programme is delivered by subject specialists who are qualified counsellors and actively involved in the field.

The qualification currently offers routes on to the following professional body registers accredited by the Professional Standards Authority (PSA):

- BACP – British Association of Counselling and Psychotherapy
- NCS – National Counselling Society
- COSCA – Counselling and Psychotherapy in Scotland
- ACC – Association of Christian Counsellors

### Career Opportunities

This qualification is designed to lead to an employed or voluntary role in a counselling agency in both medical and non-medical settings.

Learners with sufficient experience can also begin working as independent practitioners in private practice.

### Entry Requirements

- CPCAB Level 3 Certificate in Counselling Studies\*
- CPCAB Level 2 Certificate in Counselling Skills\*
- GCSE Grade C (4) or above in English and maths\*

\*Applications may be considered to those who hold equivalent qualifications.

## Professional Practice in Health and Social Care

Foundation Degree (FdSc) in Professional Practice in Health and Social Care

### Awarding Body

Sheffield Hallam University

### Course Duration

2 years — full-time

### Course Fee

£6,900 per year

### Apply online via

Our college websites  
UCAS Centre Code 'R52'

### Location

University Centre Rotherham  
North Notts College - Worksop Campus  
Dearne Valley College

### UCAS Points

48

### Course Overview

This is a specialist Foundation Degree designed for adults wanting to progress toward a professional degree within the health and social care sector.

It has been designed in response to the rapidly changing workforce demands and policy initiatives aimed at modernising services and improving quality, productivity and efficiency. It covers both the academic and work-based competencies that are relevant to a multitude of roles within health and social care settings.

### Modules Covered

#### Year 1:

- Work Based Learning 1: Academic and Practice
- Reflective and Personal Development Skills
- Essential Sciences for Person-centred Care
- Integrated Holistic Assessment and Delivery of Health and Social Care Interventions

#### Year 2:

- Work Based Learning 2: Academic and Practice
- Using and Evaluating Evidence to Inform Practice
- Promoting Health, Wellbeing and Independence
- Leadership and Management

### Why Study With Us?

After completion of Year 1 and a successful UCAS application, the course has been designed to enable you to step-off and start Year 1 of a professional degree programmes within health and social care practice, such as (but not limited to):

- Nursing (Adult, Child, Mental Health)
- Midwifery
- Allied Health Professions
- Social Work

After completion of Year 2, a successful internal progression interview with Sheffield Hallam University and completion of additional work,

the course has been designed to provide you with the opportunity to access specific professional degree programmes (with advanced entry to Year 2), of programmes such as:

- Nursing (Adult) – Year 2
- Allied Health Professions (Various) – Year 2
- Social Work – Year 2

In addition, you could progress onto Year 3 and complete a top-up year at Sheffield Hallam University, to achieve a BSc (Hons) Professional Practice in Health and Social Care.

### Career Opportunities

Upon successful completion of this course (at Year 1 or Year 2) and further study, you can gain employment across a wide range of pathways including:

- Nursing (Adult, Child, Mental Health)
- Midwifery
- Allied Health Professions
- Social Work

In addition, this programme could help you obtain the higher level knowledge, skills and behaviours to enhance your professional development and gain employment in the wider sector:

- Care Worker
- Senior Carer
- Care Home Manager
- Healthcare Assistant
- Community Support and Outreach Worker

### Entry Requirements

- 48 UCAS Points (e.g. A Levels, Access to HE Diploma, BTEC Level 3 Diploma/Extended Diploma)
- GCSE English and maths at Grade C/4 and above or equivalent
- Applications may be considered on those who hold equivalent qualifications

# Computing and Digital

## Computing and Systems Development

Bachelor of Science (Hons) in  
Computing and Systems Development

**Awarding Body**  
University of Hull

**Course Duration**  
3 years — full-time  
6 years — part-time

**Course Fee**  
£6,900 per year

**Apply online via**  
Our college websites  
UCAS Centre Code 'R52'

**Location**  
University Centre Rotherham

**UCAS Points**  
64

### Course Overview

This programme has been developed to enable you to engage with the exciting and dynamic challenges presented by the computing and systems development sector. The aim of the programme is to offer the next generation of computing students the opportunity to become confident, capable and above all, professional. This is a contemporary, cutting edge programme aimed at students eager to follow a career in various job roles within the high-tech and ever-changing world of computing and systems development.

### Why Study With Us?

The teaching team are very experienced, approachable and supportive and are fully committed to helping you achieve to the best of your ability. You'll learn in small study groups and will have access to modern hardware and industry-standard software in order to prepare you for your transition to employment. Our connections will allow you to gain the latest skills and knowledge needed to be successful in the computing and systems development industry. We also have a range of real-life projects that you will be invited to work on as part of your programme.

### Modules Covered Year 2 & 3 choose a pathway

#### Year 1

- Academic Excellence
- Networking Fundamentals
- Fundamentals of Programming
- Website Design
- User Interface Design
- Business Systems Modelling

#### Year 2

- Group Project
- E-Commerce
- Business Application of Social Media
- Database Development

##### Networking pathway:

- System Security
- Computer Communications and Networks

##### Software Development pathway:

- Web Application Development
- Data Structures and Algorithms

##### General pathway:

- Computer Communications and Networks
- Data Structures and Algorithms

#### Year 3

- Dissertation
- Professional Development
- Web Analytics

##### Networking pathway:

- Cyber Security
- Cloud Computing

##### Software Development pathway:

- Intelligent Systems
- Mobile App Development

##### General pathway:

- Intelligent Systems
- Cloud Computing

### Career Opportunities

Upon successful completion of this course you could go into employment as a Website Designer, Software Engineer, Network Technician, Data Analyst, Internet Marketer or Programmer.

### Entry Requirements

- GCSE English and maths at grade C/4 or above or equivalent
- 64 UCAS points from a minimum of two A Levels (or equivalent) in a related subject or 60 Access to HE credits (of which a minimum of 45 must be at Level 3) in a related subject
- Applicants who lack formal qualifications will be set an appropriate piece of work that will take into account their academic potential and relevant experience
- Applicants may also be admitted with credit for prior certified learning (APCL) or work/life experience or other uncertified learning (APeL)
- All applicants who are non-native English speakers, or who have not studied the final two years of school in English, must have an IELTS score of 6.0 or above
- All applicants will attend a one-week summer school

## Games Design

Foundation Degree in Games Design

### Awarding Body

Sheffield Hallam University

### Course Duration

2 years — full-time

### Course Fee

£6,900 per year

### Apply online via

Our college websites  
UCAS Centre Code 'R52'

### UCAS Points

64

### Location

University Centre Rotherham

### Course Overview

This course has been carefully designed in consultation with employers within the sector to ensure that the content represents the skills and knowledge you need to directly meet the needs of employers within games design.

The focus will be around the development of practical skills which can be applied directly to tasks which are contextualised and test your skills in the real world.

### Modules Covered

#### Year 1

- Games Design Theory
- 3D Environments for Computer Games
- Introduction to Games Mechanics
- Visual Concepts for Games
- 3D Modelling
- Game Design Project

#### Year 2

- 3D Character Modelling
- Advanced Gameplay Development
- Animation Techniques
- Group Game Design Project
- Human Computer Interfaces for Computer Games
- Sound Design for Games

### Why Study With Us?

Our staff have strong links with industry and the qualification has been designed with employers at the heart of its content. We use state-of-the-art equipment and industry-standard software. We also have a range of real-life projects that you will be invited to work on as part of your programme.

### Career Opportunities

Upon successful completion of this course you could go into employment as a Games Designer, Games Animator, Level Editor, Assistant Producer or Creative Director.

Alternatively, you can progress onto further education to top-up your degree.

### Entry Requirements

- GCSE English and maths at grade C/4 or above or equivalent
- 64 UCAS points from a minimum of two A Levels (or equivalent) in a related subject or 60 Access to HE credits (of which a minimum of 45 must be at Level 3) in a related subject
- Applicants who lack formal qualifications will be set an appropriate piece of work that will take into account their academic potential and relevant experience
- Applicants may also be admitted with credit for prior certified learning (APcL) or work/life experience or other uncertified learning (APeL)
- All applicants who are non-native English speakers, or who have not studied the final two years of school in English, must have an IELTS score of 6.0 or above
- All applicants will attend a one week summer school

# Construction

## Construction

### Construction

Higher National Certificate - Diploma Level 4 in Construction and the Built Environment

 Delivered over two days or less

#### Location

University Centre Rotherham

#### Awarding Body

Pearson BTEC

#### Course Duration

1 year — full-time (2 days a week)  
2 years — part-time (1 day a week)

#### Course Fee

£6,900 (full-time)  
£3,450 per year (part-time)

#### Apply online via

Our college websites  
UCAS Centre Code 'R52'

#### UCAS Points

64

### Course Overview

This course is a recognised qualification designed to provide you with the skills, knowledge and behaviours needed for success in a variety of roles in the construction sector.

This course also provides you with an in-depth understanding of design principles and application for construction and the built environment.

Additionally, you will learn about environmental issues relevant to planning, coordination and management of each design and construction phase, factors affecting the selection of materials, systems and equipment, environmental impact of energy and other constraints on the planning. You will also learn the roles, responsibilities and obligations (including liability for health, safety and welfare) of all parties involved in construction projects, cost implications and how technology affects the design of construction projects.

### Modules Covered

- Individual Project (Pearson-set)
- Construction Technology
- Science and Materials
- Construction Practice and Management
- Legal and Statutory Responsibilities in Construction
- Construction Information (Drawing, Detailing, Specification)
- Surveying, Measuring and Setting Out

#### Plus one optional unit

### Why Study With Us?

With industry-experienced tutors, the course is designed to equip you with the skill set desired by employers within the construction industry and provide you with new opportunities for career development.

### Career Opportunities

The course is ideal if you're looking for, or developing, a career in building surveying, architectural technology, building control, quantity surveying or construction management.

### Entry Requirements

- A construction-related Level 3 BTEC National Certificate or Diploma or Level 3 construction trade qualification
- A minimum of 5 years' relevant construction industry experience plus successful completion of an interview



# Education

## Education

### Education and Professional Development (Top-up)

Bachelor of Arts (Hons) in Education and Professional Development (Top-up)

 Delivered over two days or less

**Awarding Body**  
University of Hull

**Course Duration**  
2 years - part-time

**Course Fee**  
£4,400 per year

**Apply online via**  
Our college websites

**Location**  
University Centre Rotherham

**UCAS Points**  
N/A

### Course Overview

This is a two-year, blended learning top-up programme involving attendance at monthly day schools with an expectation of independent study and support by individual tutorials with the module tutor. In addition to this, you will be supported in your studies with academic support from our libraries.

The programme's aim is to enhance your knowledge and skills in three broad areas; critical reflection, policy and practice and research and academic scholarship.

### Modules Covered

#### Year 1

- Personal and Professional Development
- Research and Academic Study Skills
- Creativity and Innovation in Practice
- Working in Teams

#### Year 2

- Dissertation
- Professional Reflective Review

### Why Study With Us?

We have an experienced teaching team who have a good reputation for ensuring you receive a quality teaching and learning experience.

Not only will you be supported in your studies by the teaching team, you will receive help from our learning-centred staff in relation to academic and research skills.

Modern teaching rooms are also used with access to current software and a range of ICT resources.

### Career Opportunities

Upon successful completion of this course you could go into employment as a Programme Leader, Curriculum Leader, Curriculum Manager or as a Teaching and Learning Development Officer.

### Entry Requirements

- A Certificate in Education or equivalent or substantial experience
- GCSE English and maths at grade C/4 or above or equivalent
- Two years full-time teaching/training experience or part-time equivalent

## Certificate in Education: Full-time

Certificate in Education (Teaching in the Education, Training and Skills Sector) Full-time

 Delivered over two days or less

**Awarding Body**  
University of Hull

**Course Duration**  
1 year — full-time

**Course Fee**  
£6,900

**Apply online via**  
Our college websites

**Location**  
University Centre Rotherham

**UCAS Points**  
N/A

### Course Overview

This one-year course is aimed at those who are not currently working within a teaching environment.

The course will help you to develop your teaching skills, reflect on current ideas about education and training and creatively explore the professional opportunities open to you..

### Modules Covered

- Principles and Practice in Post-compulsory Education
- Practical Teaching and Learning
- Advanced Professional Practice in Context
- Exploring Specialist Teaching
- Completion of a Practical Teaching File

### Why Study With Us?

We have an experienced teaching team who have a good reputation for ensuring you receive a quality teaching and learning experience.

Not only will you be supported in your studies by the teaching team, you will receive help from our learning centred staff in relation to academic and research skills. Modern teaching rooms are also used with access to current software and a range of ICT resources.

### Career Opportunities

Upon successful completion of this course you could go into employment as a College Lecturer or Teacher, Curriculum Team Leader, a Teacher in Uniformed Services or in learning and development. You could also be a teacher with adult and community learning as well as charitable organisations.

### Entry Requirements

- A Level 3 certificate in your subject specialism (or substantial experience)
- Prepared to undertake a placement to gain a minimum of 100 hours teaching experience
- A current, valid and clean DBS
- Competence at Level 2 in Literacy and Numeracy (e.g. GCSE, Functional Skills)

## Certificate in Education: Part-time

Certificate in Education (Teaching in the Education, Training and Skills Sector) Part-time

 Delivered over two days or less

**Awarding Body**  
University of Hull

**Course Duration**  
2 years — part-time

**Course Fee**  
£3,450 per year

**Apply online via**  
Our college websites

**Location**  
University Centre Rotherham

**UCAS Points**  
N/A

### Course Overview

This two-year course will help you to develop your teaching skills, reflect on current ideas about education and training and creatively explore the professional opportunities open to you.

Much of the course is focused on practical teaching. You will gain experience of learning and teaching alongside other teachers and trainers, with support from your tutors.

### Modules Covered

- Principles and Practice in Post-compulsory Education
- Practical Teaching and Learning
- Advanced Professional Practice in Context
- Exploring Specialist Teaching
- Completion of a Practical Teaching File

### Why Study With Us?

We have an experienced teaching team who have a good reputation for ensuring you receive a quality teaching and learning experience.

Not only will you be supported in your studies by the teaching team, you will receive help from our learning-centred staff in relation to academic and research skills.

Modern teaching rooms are also used with access to current software and a range of ICT resources.

### Career Opportunities

Upon successful completion of this course you could go into employment as a College Lecturer or Teacher, Curriculum Team Leader, a Teacher in Uniformed Services or in learning and development. You could also be a teacher with adult and community learning as well as charitable organisations.

### Entry Requirements

- A Level 3 or equivalent qualification in your subject area
- You should be in paid employment as a teacher or trainer for a minimum of 50 hours per year (100 hours in total) at a recognised training or education establishment. Voluntary teaching/training may be acceptable (please ask for more details)
- A current, valid and clean DBS
- Competency at Level 2 in Literacy and Numeracy (e.g. GCSE, Functional Skills)

## Learning Support

Foundation Degree in Learning Support

**Awarding Body**  
University of Hull

**Course Duration**  
3 years — part-time

**Course Fee**  
£4,400 per year

 Delivered over two days or less

**Apply online via**  
Our college websites  
UCAS Centre Code 'R52'

**Location**  
University Centre Rotherham

**UCAS Points**  
N/A

### Course Overview

The Foundation Degree is a vocational programme for those who are involved in learning support as a Teaching Assistant, Classroom Assistant, Learning Mentor or volunteer in a learning support setting.

All modules are closely related to the work of learning support workers.

### Modules Covered

- Study Skills for Higher Education
- Supporting and Enhancing Learning
- Social Contexts of Learning
- Digital Technologies for Learning
- Working with Professionals and Families
- Managing Behaviour
- Communication, Language and Literacy
- Research Methods
- Safeguarding
- Inclusivity
- Project Module

### Why Study With Us?

The teaching team can offer you a high level of support and guidance. There is one-to-one support available when needed and studying with us allows you to continue working in your local placement. This is a well-established and popular course with a high achievement rate.

As the course is validated by University of Hull, all processes, from admissions through to assessment, are regularly reviewed to ensure that there is compliance with the University's academic regulations, equivalence in academic standards, appropriate staffing and resources are maintained and that there is a provision of a good quality Higher Education experience for all students on the programme.

### Career Opportunities

The course can enhance employment prospects and provides the first step towards a full degree via a top-up route. It is possible to progress from the Foundation Degree in Learning Support to Qualified Teacher Status (QTS) at primary level or onto the BA (Hons) Education and Professional Development top-up programme, available at the University Centre Rotherham.

### Entry Requirements

- You should be in paid or voluntary learning support position at a recognised training or education establishment
- Basic IT skills
- A good level of English

## PgCE/PGCE: Full-time

Professional Graduate Certificate in Education (PgCE) - Teaching in the Education, Training and Skills Sector: Full-time

Post Graduate Certificate in Education (PGCE) - Teaching in the Education, Training and Skills Sector: Full-time

 Delivered over two days or less

**Location**  
University Centre Rotherham

**Awarding Body**  
University of Hull

**Course Duration**  
1 year — full-time

**Course Fee**  
£6,900

**Apply online via**  
Our college websites

**UCAS Points**  
N/A

### Course Overview

This one-year course is aimed at those who are not currently employed within a teaching environment. The course will help you to develop your teaching skills, reflect on current ideas about education and training and creatively explore the professional opportunities open to you.

Much of the course is focused on practical teaching. You will gain experience of learning and teaching alongside other teachers and trainers, with support from your tutors. You will develop key skills needed to be teaching in the educations, training and skills sector.

### Modules Covered

- Principles and Practice in Post-compulsory Education
- Practical Teaching and Learning
- Advanced Professional Practice in Context
- Exploring Specialist Teaching
- Completion of a Practical Teaching File

### Why Study With Us?

We have an experienced teaching team who have a good reputation for ensuring you receive a quality teaching and learning experience.

Not only will you be supported in your studies by the teaching team, you will receive help from our learning-centred staff in relation to academic and research skills.

Modern teaching rooms are used with access to current software and a range of ICT resources.

### Career Opportunities

Upon successful completion of this course you could go into employment as a College Lecturer or Teacher, a Secondary School Teacher, Curriculum Team Leader, a Teacher in Uniformed Services or in learning and development. You could also be a teacher with adult and community learning, as well as as charitable organisations.

### Entry Requirements

- UK Bachelor's Degree or equivalent
- Prepared to undertake a placement to gain a minimum of 100 hours teaching experience
- A current, valid and clean DBS
- Competence at Level 2 in Literacy and Numeracy (e.g. GCSE, Functional Skills)

## PgCE/PGCE Part-time

Professional Graduate Certificate in Education (PgCE) - Teaching in the Education, Training and Skills Sector: Part-time

Post Graduate Certificate in Education (PGCE) - Teaching in the Education, Training and Skills Sector: Part-time

 Delivered over two days or less

### Location

University Centre Rotherham

### Awarding Body

University of Hull

### Course Duration

2 years — part-time

### Course Fee

£3,450 per year

### Apply online via

Our college websites

### UCAS Points

N/A

## Course Overview

This two-year course will help you to develop your teaching skills, reflect on current ideas about education and training and creatively explore the professional opportunities open to you.

Much of the course is focused on practical teaching. You will gain experience of learning and teaching alongside other teachers and trainers, with support from your tutors.

## Modules Covered

- Principles and Practice in Post-compulsory Education
- Practical Teaching and Learning
- Advanced Professional Practice in Context
- Exploring Specialist Teaching
- Completion of a Practical Teaching File

## Why Study With Us?

We have an experienced team of tutors who have helped nurture a large number of very successful students. They will help, guide and prepare you for study at university.

## Career Opportunities

Upon successful completion of this course you could go into employment as a College Lecturer or Teacher, a Secondary School Teacher, Curriculum Team Leader, a Teacher in Uniformed Services or in learning and development. You could also be a teacher with adult and community learning as well as charitable organisations

## Entry Requirements

- UK Bachelor's Degree or equivalent
- You should be in paid employment as a teacher or trainer for a minimum of 50 hours per year (100 hours in total) at a recognised training or education establishment. Voluntary teaching/training may be acceptable
- A current, valid and clean DBS
- Competence at Level 2 in Literacy and Numeracy (e.g. GCSE, Functional Skills)

# Engineering

## Engineering

### Electrical and Electronic Engineering

Higher National Certificate – Diploma Level 4 in Electrical and Electronic Engineering

Higher National Diploma – Diploma Level 5 in Electrical and Electronic Engineering

 Delivered over two days or less

#### Location

University Centre Rotherham  
Rotherham College

#### Awarding Body

Pearson BTEC

#### Course Duration

18 months - part-time (per level)

#### Course Fee

£6,900 per level

#### Apply online via

Our college websites  
UCAS Centre Code 'R52'

#### UCAS Points

N/A

### Course Overview

These courses are designed to provide you with a thorough understanding of the electrical and electronic technologies which are used by businesses nationally and globally.

By studying the theory behind these technologies, you will develop knowledge of how electrical and electronic engineering systems feature in everyday life. This course provides advanced technical knowledge through electrical and electronic engineering principles, concepts and theory.

This course also provides the higher-level technical vocational electrical and electronic engineering skills to prepare you for a range of related occupations. The HNC course is offered on a part-time basis over 3 semesters (18 months) and can be topped up to an HND qualification with further study.

### Modules Covered

#### Level 4 HNC:

- Engineering Maths
- Engineering Science
- Materials, Properties and Testing
- Electrical and Electronic Principles
- Automation, Robotics and PLCs
- Mechatronics
- Managing a Professional Engineering Project
- Engineering Design

#### Level 5 HND:

- Further Maths
- Industrial Power
- Electronics and Storage
- Distributed Control Systems
- Professional Engineering Project
- Industrial Systems
- Further PLCs
- Research Project

### Why Study With Us?

We continually invest in modern, state-of-the-art equipment including new mechatronics and Programmable Logic Controller (PLC) facilities.

With industry-experienced tutors, the course is designed to equip you with the skill set desired by employers within the electrical engineering industry and provide you with new opportunities for career development.

### Career Opportunities

Upon successful completion of this course you could go into employment as an Electrical Engineer, work in another engineering-related occupation or progress on to an engineering degree.

Completing these higher-level courses will also enhance your career opportunities and help meet aspirations to supervisor or managerial level roles.

### Entry Requirements

#### Level 4 HNC:

- A relevant Level 3 qualification

#### Level 5 HND:

- The HND is an 18-month top-up from the HNC Electrical and Electronic Engineering. The units gained on your HNC must be transferable to suit the HND matrix

## General Engineering

Higher National Certificate – Diploma Level 4 in General Engineering

Higher National - Diploma Level 5 in General Engineering

### Awarding Body

Pearson BTEC

### Course Duration

1 year - full-time (per level)

### Course Fee

£6,900 per level

### Apply online via

Our college websites  
UCAS Centre Code 'R52'

### Location

University Centre Rotherham  
Rotherham College

### UCAS Points

N/A

### Course Overview

These courses are designed to provide you with a thorough understanding of engineering technologies used by businesses nationally and globally.

By studying the theory behind these technologies, you will develop knowledge of how engineering systems feature in everyday life. These courses provide advanced technical knowledge through general engineering principles, concepts and theory.

You will study higher-level technical vocational engineering skills to prepare you for a range of related occupations. The HNC course can be topped up to an HND qualification with further study.

### Modules Covered

#### Level 4 HNC:

- Engineering Maths
- Engineering Science
- Materials, Properties and Testing
- Mechanical Principles
- Electrical and Electronic Principles
- Mechatronics
- Managing a Professional Engineering Project
- Engineering Design

#### Level 5 HND:

- Further Maths
- Lean Manufacturing
- Distributed Control Systems
- Professional Engineering Project
- Industrial Systems
- Further PLCs
- Research Project

### Why Study With Us?

We continually invest in new equipment and facilities, including mechatronics, Programmable Logic Controller (PLC) facilities, and metallurgy and science laboratories.

With industry-experienced tutors, the BTEC HNC and HND in General Engineering courses are designed to equip you with the skill set desired by employers within the engineering industry and provide you with new opportunities for career development.

### Career Opportunities

Upon successful completion of these courses you could go into employment as an Engineer in many different settings or progress on to an engineering degree.

Completing these higher-level courses will also enhance your career opportunities and help meet aspirations for career progression to supervisor or managerial level roles.

### Entry Requirements

#### Level 4 HNC:

- A relevant Level 3 qualification

#### Level 5 HND:

- The HND is a one-year top-up from the HNC General Engineering. The units gained on your HNC must be transferable to suit the HND matrix

## Mechanical Engineering

Higher National Certificate – Diploma Level 4 in Mechanical Engineering

Higher National Diploma – Diploma Level 5 in Mechanical Engineering

 Delivered over two days or less

### Awarding Body

Pearson BTEC

### Course Duration

18 months – part-time (per level)

### Course Fee

£6,900 per level

### Apply online via

Our college websites  
UCAS Centre Code 'R52'

### Location

University Centre Rotherham  
Rotherham College

### UCAS Points

N/A

### Course Overview

These courses are designed to provide you with a thorough understanding of engineering technologies used by businesses nationally and globally.

By studying the theory behind these technologies, you will develop knowledge of how mechanical engineering systems feature in everyday life. These courses also provide advanced technical knowledge through mechanical engineering principles, concepts and theory.

You will study higher-level technical vocational mechanical engineering skills to prepare you for a range of related occupations. The HNC course is offered on a part-time basis over 3 semesters (18 months) and can be topped up to a HND qualification with further study.

### Modules Covered

#### Level 4 HNC:

- Engineering Maths
- Engineering Science
- Materials
- Properties and Testing
- Mechanical Principles
- Fundamentals of Thermodynamics and Heat
- Machining and Processing of Engineering Materials
- Managing a Professional Engineering Project
- Engineering Design

#### Level 5 HND:

- Further Maths
- Advanced Mechanical Principles
- Lean Manufacturing
- Professional Engineering Project
- Virtual Engineering
- Advanced Manufacturing Technology
- Research Project

### Why Study With Us?

We continually invest in modern, state-of-the-art equipment including new mechatronics and Programmable Logic Controller (PLC) facilities.

With industry-experienced tutors, the BTEC HNC and HND in Mechanical Engineering are designed to equip you with the skill set desired by employers within the mechanical engineering industry and provide you with new opportunities for career development.

### Career Opportunities

Upon successful completion of this course you could go into employment as a Mechanical Engineer, work in another engineering-related occupation or progress on to an engineering degree.

Completing these higher-level courses will also enhance your career opportunities and progression to supervisor or managerial level roles.

### Entry Requirements

- GCSE English and maths at grade C/4 or above or equivalent
- Successful interview with a course tutor

# Hair and Beauty

## Hair and Beauty

### Theatrical Hair and Media Make-up

Foundation Degree in  
Theatrical Hair and Media Make-up

 Delivered over two days or less

#### Location

University Centre Rotherham  
Rotherham College

#### Awarding Body

University of Hull

#### Course Duration

1 year – full time (per level)

#### Course Fee

£6,900 (per year)

#### Apply online via

Our college websites  
UCAS Centre Code 'R52'

#### UCAS Points

N/A

### Course Overview

This course delivers a higher level of study for those who are looking for a career within the field of specialist make-up. The course will offer you the technical skills needed to work within specialised media make-up at an advanced level. Throughout your time on the course you will perform a variety of hair, make-up and character styles on your peers, models and actors. You will also develop a portfolio to showcase your professional skills.

We are very much involved within the industry and as well as your study programme you will also gain experience enabling you to enhance your CV and work with employers within theatre, the NHS and performing arts companies.

We also provide workshops, masterclasses and guest speaker sessions to come in and work alongside you – giving a current insight into the modern workplace.

### Modules Covered

#### Year 1 - Level 4

- Creative Postiche
- Current Trends in Film Hair and Media Make-up
- Mask Design and Construction
- Photographic Materials, Techniques and Processes
- Understanding the Industry of Media Hair and Make-up
- Personal and Professional Development

#### Year 2 - Level 5

- Casualty Simulation
- Costume Design
- Work-based Experience
- Special FX Prosthetics with Character Make-up
- TV and Film Hair and Media Make-up
- Wig Making and Design

### Why Study With Us?

You will have many opportunities to take part in commercial work, creating characters on theatre productions, designing high-end fashion make-up for fashion shows and working with medical professionals to create casualty effects. Former students have taken part in Europe's largest disaster simulation in London.

You will have access to state-of-the-art facilities, equipment and professional products from companies such as Illamasqua, Mistair and Kryolan.

### Career Opportunities

Upon successful completion of these courses you could go into the TV and film industry, theatre, make-up consultancy or self-employment.

### Entry Requirements

- A relevant Level 3 qualification
- GCSE English and maths at grade C/4 or above or equivalent
- Successful interview with a course tutor
- You must be flexible and able to commit to evening and weekend activities on location
- You will be expected to purchase a uniform and kit and pay for educational visits

## Theatrical Hair and Media Make-up (Top-up)

Bachelor of Arts (Hons)  
Theatrical Hair and Media Make-up (Top-up)

 Delivered over two days or less

### Location

University Centre Rotherham  
Rotherham College

### Awarding Body

University of Hull

### Course Duration

1 year - full-time (per level)

### Course Fee

£6,900

### Apply online via

Our college websites  
UCAS Centre Code 'R52'

### UCAS Points

N/A

### Course Overview

This course delivers a higher level of study for those who are looking for a career within the field of specialist make-up. The course will offer you the technical skills needed to work within specialised media make-up at an advanced level.

Throughout your time on the course you will perform a variety of hair, make-up and character styles on your peers, models and actors. You will also develop a portfolio to showcase your professional skills.

We are very much involved within the industry and as well as your study programme you will also gain experience enabling you to enhance your CV and work with employers within theatre, the NHS and performing arts companies.

We also provide workshops, masterclasses and guest speaker sessions to come in and work alongside you – giving a current insight into the modern workplace.

### Modules Covered

- Dissertation
- Fantasy Character Design Creation
- Managing the Creation of a Showcase
- Period and Historical Design Techniques
- Production Management

### Why Study With Us?

You will have many opportunities to take part in commercial work, creating characters on theatre productions, designing high-end fashion make-up for fashion shows and working with medical professionals to create casualty effects. Former students have took part in Europe's largest disaster simulation in London.

You will have access to state-of-the-art facilities, equipment and professional products from companies such as Illamasqua, Mistair and Kryolan.

### Career Opportunities

Upon successful completion of these courses you could go into the TV and film industry, theatre, make-up consultancy or self-employment.

### Entry Requirements

- A relevant Level 4/5 qualification
- GCSE English and maths at grade C/4 or above or equivalent
- Successful interview with a course tutor
- You must be flexible and able to commit to evening and weekend activities on location
- You will be expected to purchase a uniform and kit and pay for educational visits



# Media, Moving Image and Photography

## Media, Moving Image and Photography

### Media, Moving Image and Photography

Bachelor of Arts (Hons) in  
Media, Moving Image and Photography

 Delivered over two days or less

#### Location

University Centre Rotherham  
Rotherham College

#### Awarding Body

University of Hull

#### Course Duration

3 years — full-time

#### Course Fee

£6,900 per year

#### Apply online via

Our college websites  
UCAS Centre Code 'R52'

#### UCAS Points

64

### Course Overview

By embracing evolving technologies in the lens-based industries, this course allows you to develop into a work-ready, creative, independent and highly skilled media and photography practitioner.

There is exposure to both digital and traditional photographic processes, in addition to film studies and video production. Such skills will aid you on self-generated and client-led briefs, whilst providing insight into the lens-based industries.

You'll work across either a single or blended media and photography pathway, becoming production ready whilst applying academia to cultural and historical perspectives. Your work will develop into a portfolio of creative work for public consumption.

### Modules Covered

#### Year 1:

- Digital Foundations
- Research Techniques
- Historical Context

#### Year 2:

- Professional Practice
- Negotiated Practice
- Specialist Practice Investigation

#### Year 3

- Dissertation
- Freelance Practice
- Marketing and Branding for Lens-Based Practitioners
- Realisation and Development
- Planning and Developing an Exhibition

### Why Study With Us?

We provide smaller study groups with training from industry professionals in industry settings. Students will have access to industry-standard facilities, including TV studio, radio studio, photography studio, a traditional photographic dark room and editing suites.

Trips will also take place during the course of study including film festivals, exhibitions, trade shows and creative based residentials.

### Career Opportunities

- Photographer
- TV or Film Producer
- TV or Film Director
- Photography or Moving Image Editor
- Small Business Owner or Freelancer

### Entry Requirements

- A relevant Level 3 qualification
- GCSE English and maths at grade C/4 or above or equivalent
- You will also be expected to provide examples or a showreel/portfolio of work at interview
- If English is not a first language you must have an IELTS score of 6.0 with a minimum of 5.5 in all key skills or equivalent



“ I get to use modern photography equipment in workshops which help me develop a range of skills needed to progress onto a Masters Degree. ”

**Ellie Trezise**

BA (Hons) in Media, Moving Image and Photography

# Performance

## Performance

### Popular Music Performance and Production

Bachelor of Arts (Hons) in Popular Music Performance and Production

#### Location

University Centre Rotherham  
Rotherham College

**Awarding Body**  
University of Hull

**Course Duration**  
3 years — full-time

**Course Fee**  
£6,900 per year

**Apply online via**  
Our college websites  
UCAS Centre Code 'R52'

**UCAS Points**  
64

### Course Overview

The course offers an educational experience with a key focus on students' passions, which will help nurture your enthusiasm for popular music and stimulate academic curiosity in the subject. Our students are given access to a range of industry connections through experienced lecturers who continue to work in the world of music. Students specialise in their own chosen area of study including, singing, guitar, bass, recording, production etc. and work both individually and as part of a team.

We have incredible alumni working in a large range of employment areas such as performance, composition, management, technology, live sound, studio recording, education and more, and previous students actively engage with current undergraduates to offer support, guidance and networking opportunities.

### Modules Covered

#### Year 1

- Music Theory in Practice
- Introduction to Ensemble Project
- Professional Roles and Practice
- Practitioner Skills 1 (Exploring Genre)
- Practitioner Skills 2 (Exploring Technique)
- Skills for the Professional World

#### Year 2

- Musicology
- Ensemble Project
- Popular Music in Practice
- Practitioner Skills 3 (Solo Project Design)
- Practitioner Skills 4 (Solo Project Delivery)

#### Year 3

- Dissertation 1 (Advanced Research Skills)
- Dissertation 2 (Final Submission)
- Advanced Ensemble Project
- Practitioner Skills 5 (Advanced Solo Project Design)
- Practitioner Skills 6 (Advanced Solo project Delivery)

### Why Study With Us?

This course offers our students the chance to be part of the innovative Roland Music Academy. Course activities enable our students to experience live projects with outside agencies and partners. Practical projects are created in our specialised facilities including live rehearsal rooms, the area's only silent live performance room, recording studios, editing facilities, and a working studio theatre. Work experience opportunities are supported at every opportunity, allowing flexible and holistic learning.

Teamwork is pivotal to the modern music industry and our programme is specially designed to enable students from technology and performance pathways to study together and combine their skills when working towards a common goal.

### Career Opportunities

You could go into employment as a Musician, Composer, Educator, Producer, Live Sound Engineer, Freelance Practitioner, Events Organiser, Artist Management, Agent, major and indie Label Representative or venue management.

### Entry Requirements

- GCSE English at grade C/4 or above
- GCSE maths at grade C/4 or above is desirable
- A relevant Level 3 qualification which could include the following:
  - Minimum of two A-Levels
  - Level 3 Extended Diploma
  - Access to HE qualification

All candidates will attend an interview, which includes presentation of a portfolio of work or live audition.

Applicants without formal qualifications but who possess a portfolio of evidence and experience may be considered via interview.

## Theatre, Acting and Performance

Bachelor of Arts (Hons) in  
Theatre, Acting and Performance

 Delivered over two days or less

### Location

University Centre Rotherham  
Rotherham College

### Awarding Body

University of Hull

### Course Duration

3 years — full-time

### Course Fee

£6,900 per year

### Apply online via

Our college websites  
UCAS Centre Code 'R52'

### UCAS Points

64

## Course Overview

This course offers a broad practical curriculum underpinned by academic study, with the opportunity for you to influence the way you work. The main pathway is acting however, we do offer alternative modules for the musical theatre pathway.

You will gain an insight into the creation of new work, acting and performance in a range of styles from classical to contemporary. You will discover the theoretical and historical backdrop to theatre, acting and performance and will obtain industry-desired skills and contacts. You will work with professionals and highly-skilled staff, go on trips and take part in invaluable workshops..

## Modules Covered

### Year 1

- Approaches to Acting
- Acting with a Mask
- Devising Innovative Performance
- Theatre in Education and Community Arts
- Preparation, Process and Production
- Historical Context of Performance

**Musical Theatre pathway students will study Singing, Movement and Dance.**

### Year 2

- Approaches to Acting
- Site Specific Performance
- Performing Shakespeare
- Performance Study and Demonstration
- TV and Screen Acting

**Musical Theatre pathway students will do Dance and Acting for Musical theatre.**

### Year 3

- Final Integrated Performance
- Creative Research Dissertation
- Personal and Professional Development

**Musical Theatre pathway will do final Musical Theatre Performance.**

## Why Study With Us?

The course includes live projects in partnership with a range of companies and organisations such as the Rotherham Metropolitan Borough Council events team, A Mind Apart Theatre, Open Minds Theatre Company - Life Act, Break-Out Arts, Next Left Political Theatre Collective, Rotherham Music, Rotherham United and South Yorkshire Fire and Rescue as well as the opportunity to deliver workshops to local schools. We have an impeccable 100% pass rate with former students from the course being recognised as Student of the Year. Alumni have gone on to set up companies such as Renegade Productions, Anti-Social Theatre, work freelance, act professionally and teach. A number of our students have performed at the Crucible Theatre and at the National Theatre for the Connexions Festivals as well as on tour with Rotherham Underground.

## Career Opportunities

After successful completion of this course you can progress into acting, directing and arts-related pathways, including stage management, script writing or working freelance in community or youth workshops. You can set up your own companies and freelance businesses and work for casting agents and touring companies. Alternatively, you can progress onto further study on a PGCE or continue your studies to achieve a Master's degree.

## Entry Requirements

- GCSE English at grade C/4 or above
- GCSE maths at grade C/4 or above is desirable
- A relevant Level 3 qualification which could include the following:
  - Minimum of two A Levels
  - Level 3 Extended Diploma
  - Access to HE qualification

All candidates will attend an interview, which includes presentation of a portfolio of work or live audition.

Applicants without formal qualifications but who possess a portfolio of evidence and experience may be considered via interview.

# Public Services

## Public Services

### Public Services

Higher National Certificate in Public Services Level 4

Higher National Diploma in Public Services Level 5

#### Awarding Body

Pearson BTEC

#### Course Duration

1 year – full-time (per level)

#### Course Fee

£6,900

#### Apply online via

Our college websites

UCAS Centre Code 'R52'

#### Location

Dearne Valley College

#### UCAS Points

N/A

### Course Overview

These courses are designed to help students secure the knowledge, skills and behaviours needed to succeed in the Public Services sector with specific emphasis on the Criminal Justice System including Police, Border Force, Prison & Probation Services and Third Sector Voluntary Agencies.

The courses represent the latest in professional standards, which ensures that you have the knowledge and expertise to progress into employment.

### Modules Covered

#### HNC Level 4

- Organisational Structures and Culture
- Mental Health and Wellbeing
- Equality, Diversity and Fair Treatment
- Public Services in Contemporary Society
- Integrated Emergency Management
- Training for Fitness and Health
- Outdoor Skills Development
- Fitness Preparation and Testing

#### HND Level 5

- Research Project (Pearson-set)
- Reflective Professional Practice
- Operations and Project Management
- Physical Activity, Lifestyle and Health
- Cyber Security
- Advanced Fitness and Health
- Offender Management
- Terrorism and Counter Terrorism

### Why Study With Us?

On this course you will have the opportunity to increase your fitness and practical skills and have access to our excellent sport and outdoor facilities which include:

- A fully commercial, on-site sports centre (DVC Sports)
- FIFA 2-star accredited 3G Astroturf pitch
- Multisport cages
- Full-size grass football pitches
- Sports hall
- Manvers Lake and Boathouse

### Career Opportunities

These courses can enhance employment prospects and provides a route into the Police Service, Fire and Rescue Service, Ambulance Service, Custom and Excise, HM Prison Services, Civil Service, Local Government and Armed Forces.

### Entry Requirements

#### HNC Level 4

- A-Levels or relevant BTEC Level 3 qualifications
- You must be 18 years or over
- GCSE English and maths at grade C/4 or above or equivalent
- An enhanced Disclosure and Barring Service (DBS) check (formerly an enhanced Criminal Records Bureau check)

#### HND Level 5

- HNC in Public Services
- GCSE English and maths at grade C/4 or above or equivalent
- An enhanced Disclosure and Barring Service (DBS) check is a mandatory requirement

## Sport

### Sport Science

Foundation Degree (FdSc) in Sport Science

**Awarding Body**  
University of Hull

**Course Duration**  
2 years — full-time

**Course Fee**  
£6,900 per year

**Apply online via**  
Our college websites  
UCAS Centre Code 'R52'

**Location**  
Dearne Valley College  
North Notts College - Retford Post-16 Centre

**UCAS Points**  
48

### Course Overview

The Foundation Degree (FdSc) in Sport Science is ideal for individuals who wish to further their career in the sport, fitness and exercise industry.

You will develop both your practical and theoretical knowledge of coaching and fitness as well as covering contemporary units such as coaching active lifestyles, special populations, psychology and innovative and exclusive delivery.

Students also get the opportunity to participate in our Sports Academy, attend trips to sports training facilities and a residential, and receive talks and lectures from industry guest speakers. Upon successful completion of this course you can progress onto the Bachelor of Science (Hons) in Sport Science (Top-up).

### Modules Covered

- Exercise Physiology
- Gym Instruction
- Coaching Active Lifestyles
- Personal and Professional Development
- Psychology
- Sports Coaching Foundation
- Advanced Trainer
- Coaching in Sport
- Informed Research
- Nutrition
- Human Assessment
- Special Populations

### Why Study With Us?

On this course you will have access to our excellent sports facilities which include:

- A fully commercial, on-site sports centre (DVC Sports)
- FIFA 2-star accredited 3G AstroTurf pitch
- Multisport cages
- Full-size grass football pitches
- Sports hall
- State-of-the-art fitness suite

We use a wealth of sporting equipment and technology used by professional sports clubs including a sports GPS system, timing gates and various other technological equipment used to measure fitness and performance.

### Career Opportunities

Upon successful completion of this course you could go into employment as a Sports Coach, Performance Coach, Fitness Centre Manager, Sports Development Officer and much more.

With further study you could also progress into employment in teaching or sports analysis.

### Entry Requirements

- GCSE English and maths at grade C/4 or above or equivalent
- An enhanced Disclosure and Barring Service (DBS) check is a mandatory requirement

**Plus one of the following**

- 48 UCAS points
- Access to Higher Education (HE) Diploma from a recognised HE course

## Sport Science (Top-up)

Bachelor of Science (Hons)  
in Sport Science (Top-up)

**Awarding Body**  
University of Hull

**Course Duration**  
1 year — full-time

**Course Fee**  
£6,900 per year

**Apply online via**  
Our college websites  
UCAS Centre Code 'R52'

**Location**  
Dearne Valley College

**UCAS Points**  
N/A

### Course Overview

This degree is ideal for individuals who wish to top-up from a relevant Foundation Degree to further their career in the sport, fitness and exercise industry.

You will develop both your practical and theoretical knowledge of fitness and performance as well as covering units such as contemporary issues in physical education and sport and performance analysis.

### Modules Covered

- Dissertation
- Advanced Coaching Science
- Contemporary Issues in Sport
- Advanced Special Populations
- Employability and Enterprise
- Sports Science Support

### Why Study With Us?

On our BSc (Hons) Degree in Sport Science students have access to our excellent sports facilities which include:

- A fully commercial, on-site sports centre (DVC Sports)
- FIFA 2-star accredited 3G Astro turf pitch
- Multisport cages
- Full-size grass football pitches
- Sports hall
- State-of-the-art fitness suite

We use a wealth of sporting equipment and technology used by professional sports clubs including a sports GPS system, timing gates and various other technological equipment used to measure fitness and performance.

### Career Opportunities

Upon successful completion of this course you could go into employment as a Sports Coach, Performance Coach, Fitness Centre Manager or Sports Development Officer.

With further study you could progress into employment in teaching or sports analysis.

### Entry Requirements

- You should hold a Foundation Degree in Sport and Exercise or a similar Foundation Degree
- Candidates with other Level 5 qualifications in appropriate subjects may also be considered but must have completed a research methods module
- Completion of a two-year Foundation Degree in a related discipline with minimum 50% grade in year 2
- GCSE English and maths at grade C/4 or above or equivalent

# Course Index.

## Higher and Degree Apprenticeships 32

## Access to Higher Education (HE) 48

Art and Design Level 3	49
Art and Design Foundation Diploma	50
Computing Level 3	51
Health Science Professions Level 3	52
Health Science Professions Fast Track	53
Humanities and Social Sciences	54
Science Level 3	55

## Accounting, Business and Management 56

Accounting and Business Level 4	57
Business and Management BA (Hons)	58
Tourism and Hospitality Management Foundation Degree	59

## Animal Management 60

Animal Management HNC/HND	61
---------------------------	----

## Arts 62

Fine and Applied Art BA (Hons)	64
Graphic Design Foundation Degree	65
Graphic Communication Design BA (Hons) (Top-up)	66

## Caring Professions 68

Early Childhood Studies Foundation Degree	70
Early Childhood Studies BA (Hons) (Top-up)	71
Therapeutic Counselling Level 4	72
Professional Practice in Health and Social Care Foundation Degree	73

## Computing and Digital 74

Computing and Systems Development BSc (Hons)	75
Games Design Foundation Degree	76

## Construction 78

Construction and the Built Environment HNC	79
--	----

## Education 80

Education and Professional Development (Top-up)	81
Certificate in Education: Full-time	82
Certificate in Education: Part-time	83
Learning Support Foundation Degree	84
PgCE/PGCE: Full-time	85
PgCE/PGCE: Part-time	86

## Engineering 88

Electrical and Electronic Engineering HNC/HND	89
General Engineering HNC/HND	90
Mechanical Engineering HNC/HND	91

## Hair and Beauty 92

Theatrical Hair and Media Make-up Foundation Degree	93
Theatrical Hair and Media Make-up (Top-up)	94

## Media and Photography 96

Media, Moving Image and Photography BA (Hons)	97
---	----

## Performance 100

Popular Music Performance and Production BA (Hons)	101
Theatre, Acting and Performance BA (Hons)	102

## Public Services 104

Public Services HNC/HND	105
-------------------------	-----

## Sport 106

Sport Science Foundation Degree	107
Sport Science (Top-up)	108



# Open Events

**Wednesday 19th May 2021**

3pm - 6pm

---

**Wednesday 14th July 2021**

3pm - 6pm

---

**Wednesday 29th September 2021**

3pm - 6pm

---

**Wednesday 24th November 2021**

3pm - 6pm

---

**Wednesday 12th January 2022**

3pm - 6pm

Please refer to our website

[ucr.rotherham.ac.uk/open-events](http://ucr.rotherham.ac.uk/open-events)

**Rotherham** College  
**North Notts** College  
**Dearne Valley** College  
and  
**University Centre Rotherham**

Part of  
**RNN** GROUP

